



europäisches Patentamt
European Patent Office
Office européen des brevets



Publication number: **0 343 684 B1**

(12)

EUROPEAN PATENT SPECIFICATION

- (43) Date of publication of patent specification: 21.04.93 (51) Int. Cl.⁵: **C12N 15/12, C12P 21/00, C07K 13/00, C07H 21/04, //(C12N15/12,C12R1:19)**
- (21) Application number: 89109540.8
- (22) Date of filing: 26.05.89

Divisional application 92114773.2 filed on 26/05/89.

(54) Interleukin-1 inhibitors.

- (30) Priority: 27.05.88 US 199915
31.08.88 US 238713
23.09.88 US 248521
03.11.88 US 266531
- (41) Date of publication of application: 29.11.89 Bulletin 89/48
- (43) Publication of the grant of the patent: 21.04.93 Bulletin 93/16
- (64) Designated Contracting States: AT BE CH DE ES FR GB GR IT LI LU NL SE
- (16) References cited: WO-A-89/01946

THE JOURNAL OF IMMUNOLOGY, vol. 139, no. 5, September 1, 1987 (Baltimore, USA)
P.SECKINGER et al. "A Urine Inhibitor of Interleukin 1 Activity Affects Both Interleukin 1 alpha and 1 betabut not Tumor Necrosis Factor alpha" pages 1541-1545

- (73) Proprietor: SYNERGEN, INC.
1885, 33rd Street
Boulder Colorado 80301(US)
- (72) Inventor: Hannum, Charles H.
6150 Willow Lane
Boulder Colorado 80301(US)
Inventor: Eisenberg, Stephen P.
2325 Panorama Avenue
Boulder Colorado 80302(US)
Inventor: Thompson, Robert C.
1820 Lehigh Street
Boulder Colorado 80303(US)
Inventor: Arend, William P.
4151 Montview Blvd.
Denver Colorado 80207(US)
Inventor: Joslin, Fenneke G.
1900 Magnolia Street
Denver Colorado 80220(US)
Inventor: Sommer, Andreas
718 Oak Grove Road "D"
Concord California 945183(US)

Note: Within nine months from the publication of the mention of the grant of the European patent, any person may give notice to the European Patent Office of opposition to the European patent granted. Notice of opposition shall be filed in a written reasoned statement. It shall not be deemed to have been filed until the opposition fee has been paid (Art. 99(1) European patent convention).

EP 0 343 684 B1

BIOCHEMICAL AND BIOPHYSICAL RE-
SEARCH COMMUNICATIONS, vol. 147, n . 2,
Sept mb r 15, 1987 (New York) P.N.BORIES
et al. "Human alpha 1-Acid Glycoprotein-
Exposed Macrophages Release Interleukin 1
Inhibitory Activity" pages 710-715

Ⓓ Representative: Patentanwälte Grün cker,
Kink ldey, Stockmair & Partner
Maximilianstrasse 58
W-8000 München 22 (DE)

Description

Background of the Invention

5 A. IL-1

Interleukins-1 are a class of proteins produced by numerous cell-types, including monocytes and some macrophages. This class includes at least two 17-18 kilodalton proteins known as interleukin-1 alpha and interleukin-1 beta. These proteins have important physiological effects on a number of different target cells
10 involved in the inflammatory and immune responses. The proteins are co-mitogens (with phytohemagglutinin) for T-cells, cause both fibroblasts and chondrocytes to secrete latent collagenase, and increase the surface adhesive powers of endothelial cells for neutrophils. In addition, they act on the hypothalamus as pyrogens, they stimulate the catabolism of muscle protein, and they cause hepatocytes to synthesize a class of proteins known as "acute phase reactants." Thus, interleukins-1 (IL-1) are obviously an important part of an
15 organism's response to infection and injury.

B. Pathological Roles of IL-1

However, despite their normally beneficial effects, circumstances have come to light in which the
20 actions of IL-1 are harmful. For example, IL-1 may increase the level of collagenase in an arthritic joint and has been implicated as a mediator of both the acute and chronic stages of immunopathology in rheumatoid arthritis. IL-1 may be responsible for altering endothelial cell function, directing the chemotaxis and migration of leukocytes and lymphocytes into the synovial tissue, inducing capillary proliferation, and stimulating macrophage accumulation in the synovial lining during the acute phase of this disease. In the
25 phase of tissue destruction, IL-1 has been implicated as a mediator in induction of tissue damage through stimulating release of enzymes from fibroblasts and chondrocytes.

In addition, excessive IL-1 production has been demonstrated in the skin of patients with psoriasis and high levels of IL-1 can be found in the synovial fluid of patients with psoriatic arthritis. IL-1 released by cells in the inflamed synovium in psoriatic arthritis may mediate tissue destruction through stimulation of enzyme
30 release from other cells. The joint pathology of Reiter's syndrome is similar to that seen in psoriatic arthritis and in rheumatoid arthritis. IL-1 has been implicated as a mediator of tissue destruction in these three different forms of inflammatory arthritis. Moreover, IL-1 may be found in the synovial fluid of patients with osteoarthritis. The release of IL-1 by chondrocytes has been implicated in the destruction of articular cartilage in this disease.

IL-1 may also increase the severity of autoimmune diseases. For example, decreased IL-1 production
35 has been described from peripheral blood cells in persons suffering from systemic lupus erythematosus. Moreover, some of the alterations in B lymphocyte function may be related to abnormalities in IL-1 production or IL-1 availability.

Excessive IL-1 production has been demonstrated in the peripheral monocytes of patients with
40 scleroderma, and IL-1 has been implicated as a possible agent of fibrosis through stimulation of collagen production by fibroblasts. The mechanism of tissue damage in dermatomyositis might also involve cell-mediated immunity and IL-1 may therefore be involved as a mediator in this pathophysiological process.

Acute and chronic interstitial lung disease is characterized by excessive collagen production by lung
45 fibroblasts which may be stimulated by IL-1. Recent studies on animal model of pulmonary hypertension indicate that IL-1 may be responsible for induction of endothelial cell changes that result in narrowing of pulmonary arteries. It is this narrowing that leads to pulmonary hypertension and further secondary damage. Thus, IL-1 inhibitors could be useful in treating these lung diseases.

Recent studies have described that IL-1 is capable of directly damaging the beta cells in the Islets of
50 Langerhans that are responsible for the production of insulin. IL-1 damage to the cells is now hypothesized to be a primary event in the acute phase of juvenile diabetes mellitus.

Monocyte and macrophage infiltration in the kidneys predominates in many forms of acute and chronic
glomerulonephritis. IL-1 release by these cells may result in local accumulation of other inflammatory cells, eventually leading to inflammatory damage and fibrotic reaction in the kidneys.

It has been demonstrated that the crystals found in tissues or fluids in gout or pseudogout can directly
55 stimulate macrophages to release IL-1. Thus, IL-1 may be an important mediator in the inflammatory cycle in these diseases.

IL-1 is capable of inducing loss of calcium from bones and may be responsible for the osteoporosis that
is seen in inflammatory joint diseases.

Keratinocytes from patients with psoriasis release large amounts of IL-1. This mediator may be responsible for the secondary cell proliferation and accumulation which occurs in the skin in patients with this disease.

IL-1 is one of the important endogenous pyrogens and may be responsible for inducing the marked degree of fever seen in some infectious diseases such as acute febrile illnesses due to bacteria or viruses.

Sarcoidosis is characterized by granulomatous lesions in many different organs in the body. IL-1 has been shown to be capable of inducing granuloma formation in vitro and may be involved in this process in patients with sarcoidosis.

Excessive IL-1 production has been demonstrated in peripheral monocytes from both Crohn's disease and ulcerative colitis. Local IL-1 release in the intestine may be an important mediator in stimulating the inflammatory cycle in these diseases.

Certain lymphomas are characterized by fever, osteoporosis and even secondary arthritis. Excessive IL-1 release has been demonstrated by some lymphoma cells in vitro and may be responsible for some of the clinical manifestations of these malignancies. Also, IL-1 production by some malignant lymphocytes may be responsible for some of the fever, acute phase response and cachexia seen with leukemias.

IL-1 release by astrocytes in the brain is thought to be responsible for inducing the fibrosis that may result after damage to the brain from vascular occlusion.

C. Uses for an IL-1 Inhibitor

In these and other circumstances in which IL-1 has a harmful effect, there is clearly a clinical use for an inhibitor of IL-1 action. As IL-1 is a co-mitogen for T-cells, it is central to the development of autoimmune and other immune diseases. Thus, systemically administered, IL-1 inhibitors could be useful immunosuppressive agents. Locally applied, such IL-1 inhibitors could serve to prevent tissue destruction in an inflamed joint and other sites of inflammation. Indeed, to prevent tissue destruction some IL-1 inhibitors could be even more effective when administered in conjunction with collagenase inhibitors.

Therapeutic intervention against the action of IL-1 might be possible at the level of synthesis, secretion, or the target cell's binding or response to the protein. IL-1 is synthesized by monocyte/macrophages and other cells in response to lipopolysaccharides, complement fragments and viruses. Any molecule that blocks binding of these inducing agents to producer cells or which interferes with their effects on the physiology of these cells would serve as a regulator of IL-1 action. IL-1 is not secreted by a traditional secretion system since mRNAs have been isolated that code for at least two 30 kD precursors of the proteins but which do not contain a hydrophobic signal sequence. Release of the active protein from the inactive precursor probably requires proteolysis of that precursor. An inhibitor of the release of IL-1 or IL-1s from their precursors could theoretically regulate IL-1 action. IL-1 probably acts on target cells through a classical receptor-mediated pathway, although that receptor has not yet been isolated. Thus, it could be that a molecule that interferes with IL-1 binding to its receptors, or down-regulates these receptors, could also regulate IL-1 action. Moreover, although the intracellular events following receptor binding of IL-1 are not yet fully understood, it is possible that agents exist that can interfere with the cellular responses to other receptor-mediated events and therefore block IL-1 action. For the reasons stated above, proteins and small molecules capable of inhibiting IL-1 in one or more of these manners have been sought.

Surprisingly, the present inventors have found at least two IL-1 inhibitor proteins with IL-1 inhibiting properties. These molecules have been obtained in a purified form which will enable one of ordinary skill in the art to determine their amino acid sequence. Furthermore, a preparation of cells has been characterized which produce these proteins, and an mRNA that leads to its synthesis has been characterized. Finally, an antisera has been developed that will facilitate screening of cDNA expression libraries for the genes coding for these inhibitors. Together these reagents will allow cDNAs encoding the IL-1 inhibitors to be cloned. These genes will, in turn, make possible the large scale production of IL-1 inhibitors suitable for use in pharmaceutical formulations useful in treating pathophysiological conditions mediated by IL-1.

Summary of the Invention

This invention relates to IL-1 inhibitors ("IL-1i") generally and, more specifically, to a monocyte-derived IL-1 inhibitor. Additionally, the present invention relates to biologically-active analogs of these inhibitors.

An object of the present invention is to provide purified forms of IL-1 inhibitors which are active against IL-1a or IL-1B or a combination thereof. An additional object of the present invention is to provide these inhibitors in purified forms to enable the determination of their amino acid sequence. A further object is to provide the amino acid sequences of certain IL-1 inhibitors.

active analogs of such IL-1 inhibitors with enhanced or equivalent properties is also one of the objects of the invention.

This object is achieved by an interleukin-1 inhibitor according to claim 1.

Additionally, it is an object of this invention to provide a recombinant-DNA system for the production of the IL-1 inhibitors described herein. This object is achieved by a DNA sequence according to claims 6 or 7.

Additional objects and advantages of the invention will be set forth in part in the description which follows, and in part will be obvious from the description or may be learned from the practice of the invention. The objects and advantages may be realized and attained by means of the instrumentalities and combinations particularly pointed out in the appended claims.

To achieve the objects and in accordance with the purposes of the present invention, IL-1 inhibitors are disclosed which exhibit inhibitory activity against IL-1. The preferred inhibitors have been isolated in a purified form from monocyte-conditioned medium with monocytes grown on IgG-coated plates.

Moreover, to achieve the objects and in accordance with the purposes of the present invention, a recombinant-DNA system for the creation of these IL-1 inhibitors and their analogs is also disclosed. A preferred embodiment of this system includes at least one cDNA clone or its synthetic equivalent encoding at least one IL-1 inhibitor along with vectors and cells constituting an expression system capable of expressing the IL-1 inhibitors disclosed herein. Antisera for use in identifying these cDNA clones is also provided. Expression systems for producing these IL-1 inhibitors using these cDNA clones, their analogs, or other DNA sequences encoding these inhibitors are also provided.

Brief Description of the Figures

Figures 1a and 1b depict the protein profile of the Mono Q chromatography of two metabolically-labelled monocyte supernatants. The cells were cultured on IgG (1a) or fetal calf serum (1b) coated plates.

Figure 2a shows silver stained gels of fractions from the regions indicated in Figures 1a and 1b.

Figure 2b is an autoradiogram of the gels shown in Figure 2a.

Figures 3a, b and c present data on the purified IL-1i of Example 1. Figure 3a presents chromatography data with the radioactivity pattern superimposed. Figure 3b presents silver stained gels run on samples of the fractions indicated in Figure 3a. Figure 3c presents autoradiograms of the gels in Figure 3b.

Figures 4a and b present the results of gel filtration chromatograms of Mono Q-purified IL-1i.

Figures 5a and b present Western analysis of mouse antisera.

Figure 6 depicts the construction of plasmid pSVXVPL2IL-1i.

Figure 7 depicts the construction of plasmid pMK-SGE:IL-1i.

Figures 8a-d present data on IL-1i- α . Figures 8a and 8b present chromatography data. Figure 8c presents a silver stained gel run on samples of fractions indicated in figure 8b. Figure 8d presents an autoradiogram.

Figures 9a and 9b present data on IL-1i- β . Figure 9a presents chromatography data. Figure 9b presents SDS-PAGE data.

Figure 10 presents data of IL-1i- α peptide separation.

Figure 11 presents data of IL-1i- β peptide separation.

Figure 12a is a photograph of the gel with the GT10-IL1i-2A digested with EcoRI after electrophoresis according to Example 6.

Figure 12b presents data of an autoradiogram of a Southern blot of the gel shown in Figure 12a.

Figure 14 depicts the nucleotide sequence of GT10-IL1i-2A.

Figure 15 depicts a peptide including, inter alia, an IL-1i sequence and a secretory leader sequence.

Description of the Preferred Embodiment

Reference will now be made in detail to the presently preferred embodiments of the invention, which, together with the following examples, serve to explain the principles of the invention.

A. Inhibitor from Human Monocytes

As noted above, the present invention relates to IL-1 inhibitors which have been isolated in a purified form. Preferably, the IL-1 inhibitors of the present invention are derived from human monocyte conditioned medium where the monocytes are grown on IgG coated vessels. In addition, the invention encompasses substantially purified IL-1 inhibitors of any origin which are biologically equivalent to the inhibitor derived from human monocyte-contained medium.

By "biologically equivalent", as used throughout the specification and claims, we mean compositions of the present invention that are capable of preventing IL-1 action in a similar fashion, but not necessarily to the same degree, as the native IL-1 inhibitor isolated from monocytes. By "substantially homologous" as used throughout the ensuing specification and claims, is meant a degree of homology to the native IL-1 inhibitor isolated from monocyte-conditioned medium in excess of that displayed by any previously reported IL-1 inhibitors. Preferably, the degree of homology in excess of 70 percent, more preferably in excess of 80 percent and even more preferably in excess of 90 percent. A particularly preferred group of inhibitors are in excess of 95 percent homologous with the native inhibitor. The percentage of homology as described is calculated as the percentage of amino acid residues found in the smaller of the two sequences that align with identical amino acid residues in the sequence being compared when four gaps in a length of 100 amino acids may be introduced to assist in that alignment as set forth by Dayhoff, M.D. in Atlas of Protein Sequence and Structure Vol.5, p. 124 (1972), National Biochemical Research Foundation, Washington, D.C., specifically incorporated herein by reference.

The preferred IL-1 inhibitors of the present invention have been derived from monocyte-conditioned medium and, for the first time, have been isolated in a purified form. For the purposes of the present application, "pure form" or "purified form" when used to refer to the IL-1 inhibitors disclosed herein, shall mean a preparation which is substantially free of other proteins which are not IL-1 inhibitor proteins. Preferably, the IL-1 inhibitors of the present invention are at least 90% pure and preferably 95% pure.

At least three purified IL-1 inhibitors have been isolated by the methods of the Example. These include inhibitor 1, inhibitor 2 and inhibitor 3. Inhibitor 1 is behaving as a 22-23 kDa molecule on SDS-PAGE with an approximate isoelectric point of 4.8 and eluting from a Mono Q FPLC column at around 52 mM NaCl in Tris buffer, pH 7.6. Inhibitor 2 is also a 22-23 kDa protein, $pI = 4.8$, but eluting from a Mono Q column at 60 mM NaCl. Inhibitor 3 is a 20 kDa protein and elutes from a Mono Q column at 48 mM NaCl. Inhibitors 1, 2 and 3 are related immunologically and functionally. Having obtained these inhibitors in purified forms has enabled the present inventors to obtain their amino acid sequences. Using the purified inhibitors disclosed for the first time herein and methods such as those described in and by ABI Protein Sequencer technical manuals supplied with the ABI Protein Sequencer, a substantial proportion of the amino acid sequences of these inhibitors can be deduced.

Example 3 shows amino acid sequence data obtained of three species of IL-1 inhibitors, namely IL-1 α , IL-1 β , and IL-1 γ .

The present inventors have discovered at least one antibody raised against an IL-1 inhibitor. Other polyclonal and monoclonal antibodies against this and other IL-1 inhibitors may be prepared by methods known to those of ordinary skill in the art. One particular polyclonal antibody is described in Example 4.

B. Recombinant Inhibitor

1. General

A recombinant DNA method for the manufacture of an IL-1 inhibitor is now disclosed. In one embodiment of the invention, the active site functions in a manner biologically equivalent to that of the native IL-1 inhibitor isolated from human. A natural or synthetic DNA sequence may be used to direct production of the IL-1 inhibitors. This method comprises:

- (a) culturing a host cell that includes a vector, said vector including a DNA sequence encoding the IL-1i of any of claims 1 to 4 and including operational elements needed to express the DNA sequence in the host cell under conditions appropriate for amplification of said vector and expression of the IL-1i; and
- (b) harvesting the IL-1i protein.

2. DNA Sequences

DNA sequences contemplated for use in this method are discussed in part in Example 5 and in part in Example 6. It is contemplated that these sequences include synthetic and natural DNA sequences. The natural sequences further include cDNA or genomic DNA segments.

Example 6 provides a molecular clone of DNA encoding a protein identical to that isolated in Examples 1-3. In Example 6, a plaque, GT10-IL1i-2A, was isolated from a GT10 Library. The phage within this plaque was propagated and the DNA was isolated and digested with EcoRI. An EcoRI fragment of 1850 base pairs carries the coding sequence for IL-1 inhibitor. Figure 14 shows the partial DNA sequence of the EcoRI fragment.

In light of the teachings contained herein and procedures known, other synthetic polynucleotide sequences will be available to one of ordinary skill in the art. As an example of the current state of the art relating to polynucleotide synthesis, one is directed to Matteucci, M.D. and Caruthers, M.H., in J. Am. Chem. Soc. 103:3185 (1981) and Beaucage, S.L. and Caruthers, M.H. in Tetrahedron Lett. 22:1859 (1981), and to the instructions supplied with an ABI oligonucleotide synthesizer, each of which is specifically incorporated herein by reference.

These synthetic sequences may be identical to the natural sequences described in more detail below or they may contain different nucleotides. In one embodiment, if the synthetic sequences contain nucleotides different from those found in the natural DNA sequences of this invention, it is contemplated that these different sequences will still encode a polypeptide which has the same primary structure as IL-1i isolated from monocytes. In an alternate embodiment, the synthetic sequence containing different nucleotides will encode a polypeptide which has the same biological activity as the IL-1i described herein.

Additionally, the DNA sequence may be a fragment of a natural sequence, i.e., a fragment of a polynucleotide which occurred in nature and which has been isolated and purified for the first time by the present inventors. In one embodiment, the DNA sequence is a restriction fragment isolated from a cDNA library.

In an alternative embodiment, the DNA sequence is isolated from a human genomic library. An example of such a library useful in this embodiment is set forth by Lawn et al. in Cell 15:1157-1174 (1978), specifically incorporated herein by reference.

In a preferred version of this embodiment, it is contemplated that the natural DNA sequence will be obtained by a method comprising:

- (a) Preparation of a human cDNA library from cells, preferably monocytes, capable of generating an IL-1 inhibitor in a vector and cell capable of amplifying and expressing all or part of that cDNA;
- (b) Probing the human DNA library with at least one probe capable of binding to the IL-1 inhibitor gene or its protein product;
- (c) Identifying at least one clone containing the gene coding for the inhibitor by virtue of the ability of the clone to bind at least one probe for the gene or its protein product;
- (d) Isolation of the gene or portion of the gene coding for the inhibitor from the clone or clones chosen;
- (e) Linking the gene, or suitable fragments thereof, to operational elements necessary to maintain and express the gene in a host cell.

The natural DNA sequences useful in the foregoing process may also be identified and isolated through a method comprising:

- (a) Preparation of a human genomic DNA library, preferably propagated in a recArecBC E. coli host;
- (b) Probing the human genomic DNA library with at least one probe capable of binding to an IL-1 inhibitor gene or its protein product;
- (c) Identification of at least one clone containing the gene coding for the inhibitor by virtue of the ability of the clone to bind at least one probe for the gene or its protein product;
- (d) Isolation of the gene coding for the inhibitor from the clone(s) identified; and
- (e) Linking the gene, or suitable fragments thereof, to operational elements necessary to maintain and express the gene in a host cell.

In isolating a natural DNA sequence suitable for use in the above-method, it is preferred to identify the two restriction sites located within and closest to the end portions of the appropriate gene or sections of the gene. The DNA segment containing the appropriate gene is then removed from the remainder of the genomic material using appropriate restriction endonucleases. After excision, the 3' and 5' ends of the DNA sequence and any exon junctions are reconstructed to provide appropriate DNA sequences capable of coding for the N- and C- termini of the IL-1 inhibitor protein and capable of fusing the DNA sequence to its operational elements.

3. Vectors

(a) Microorganisms, especially E. coli

The vectors contemplated for use in the present invention include any vectors into which a DNA sequence as discussed above can be inserted, along with any preferred or required operational elements, and which vector can then be subsequently transferred into a host cell and replicated in such cell. Preferred vectors are those whose restriction sites have been well documented and which contain the operational elements preferred or required for transcription of the DNA sequence. However, certain embodiments of the present invention are also envisioned which employ currently undiscovered vectors which would contain one

or more of the cDNA sequences described herein. In particular, it is preferred that all of these vectors have some or all of the following characteristics: (1) possess a minimal number of host-organism sequences; (2) be stably maintained and propagated in the desired host; (3) be capable of being present in a high copy number in the desired host; (4) possess a regulatable promoter positioned so as to promote transcription of the gene of interest; (5) have at least one marker DNA sequence coding for a selectable trait present on a portion of the plasmid separate from that where the DNA sequence will be inserted; and (6) a DNA sequence capable of terminating transcription.

In various preferred embodiments, these cloning vectors containing and capable of expressing the DNA sequences of the present invention contain various operational elements. These "operational elements," as discussed herein, include at least one promoter, at least one Shine-Dalgarno sequence and initiator codon, and at least one terminator codon. Preferably, these "operational elements" also include at least one operator, at least one leader sequence for proteins to be exported from intracellular space, at least one gene for a regulator protein, and any other DNA sequences necessary or preferred for appropriate transcription and subsequent translation of the vector DNA.

Certain of these operational elements may be present in each of the preferred vectors of the present invention. It is contemplated that any additional operational elements which may be required may be added to these vectors using methods known to those of ordinary skill in the art, particularly in light of the teachings herein.

In practice, it is possible to construct each of these vectors in a way that allows them to be easily isolated, assembled and interchanged. This facilitates assembly of numerous functional genes from combinations of these elements and the coding region of the DNA sequences. Further, many of these elements will be applicable in more than one host. It is additionally contemplated that the vectors, in certain preferred embodiments, will contain DNA sequences capable of functioning as regulators ("operators"), and other DNA sequences capable of coding for regulator proteins.

(i) Regulators

These regulators, in one embodiment, will serve to prevent expression of the DNA sequence in the presence of certain environmental conditions and, in the presence of other environmental conditions, will allow transcription and subsequent expression of the protein coded for by the DNA sequence. In particular, it is preferred that regulatory segments be inserted into the vector such that expression of the DNA sequence will not occur, or will occur to a greatly reduced extent, in the absence of, for example, isopropylthio-beta-D-galactoside. In this situation, the transformed microorganisms containing the DNA sequence may be grown to at a desired density prior to initiation of the expression of IL-1i. In this embodiment, expression of the desired protein is induced by addition of a substance to the microbial environment capable of causing expression of the DNA sequence after the desired density has been achieved.

(ii) Promoters

The expression vectors must contain promoters which can be used by the host organism for expression of its own proteins. While the lactose promoter system is commonly used, other microbial promoters have been isolated and characterized, enabling one skilled in the art to use them for expression of the recombinant IL-1i.

(iii) Transcription Terminator

The transcription terminators contemplated herein serve to stabilize the vector. In particular, those sequences as described by Rosenberg, M. and Court, D., in Ann. Rev. Genet. 13:319-353 (1979), are contemplated for use in the present invention.

(iv) Non-Translated Sequence

It is noted that, in the preferred embodiment, it may also be desirable to reconstruct the 3' or 5' end of the coding region to allow incorporation of 3' or 5' non-translated sequences into the gene transcript. Included among these non-translated sequences are those which stabilize the mRNA as they are identified by Schmittner, U., McKenney, K., Rosenberg, M and Court, D. in J. Mol. Biol. 176:39-53 (1984).

(v) Ribosome Binding Sites

The microbial expression of foreign proteins requires certain operational elements which include, but are not limited to, ribosome binding sites. A ribosome binding site is a sequence which a ribosome recognizes and binds to in the initiation of protein synthesis as set forth in Gold, L., et al., *Ann. Rev. Microbio.* 35:557-580; or Marquis, D.M., et al., *Gen.* 42:175-183 (1986). A preferred ribosome binding site is GAGGCGCAAAAA(ATG).

(vi) Leader Sequence and Translational Coupler

Additionally, it is preferred that DNA coding for an appropriate secretory leader (signal) sequence be present at the 5' end of the DNA sequence as set forth by Watson, M.E. in *Nucleic Acids Res.* 12:5145-5163 if the protein is to be excreted from the cytoplasm. The DNA for the leader sequence must be in a position which allows the production of a fusion protein in which the leader sequence is immediately adjacent to and covalently joined to the inhibitor, i.e., there must be no transcription or translation termination signals between the two DNA coding sequences. The presence of the leader sequence is desired in part for one or more of the following reasons. First, the presence of the leader sequence may facilitate host processing of the IL-1i. In particular, the leader sequence may direct cleavage of the initial translation product by a leader peptidase to remove the leader sequence and leave a polypeptide with the amino acid sequence which has potential protein activity. Second, the presence of the leader sequence may facilitate purification of the IL-1i, through directing the protein out of the cell cytoplasm. In some species of host microorganisms, the presence of an appropriate leader sequence will allow transport of the completed protein into the periplasmic space, as in the case of some *E. coli*. In the case of certain *E. coli*, *Saccharomyces* and strains of *Bacillus* and *Pseudomonas*, the appropriate leader sequence will allow transport of the protein through the cell membrane and into the extracellular medium. In this situation, the protein may be purified from extracellular protein. Thirdly, in the case of some of the proteins prepared by the present invention, the presence of the leader sequence may be necessary to locate the completed protein in an environment where it may fold to assume its active structure, which structure possesses the appropriate protein activity.

In one preferred embodiment of the present invention, an additional DNA sequence is located immediately preceding the DNA sequence which codes for the IL-1 inhibitor. The additional DNA sequence is capable of functioning as a translational coupler, i.e., it is a DNA sequence that encodes an RNA which serves to position ribosomes immediately adjacent to the ribosome binding site of the inhibitor RNA with which it is contiguous. In one embodiment of the present invention, the translational coupler may be derived using the DNA sequence TAACGAGGCGCAAAAAATGAAAAAGACAGCTATCGCGATCTTGGAGGATGATTAAATG and methods currently known to those of ordinary skill in the art related to translational couplers.

(vii) Translation Terminator

The translation terminators contemplated herein serve to stop the translation of mRNA. They may be either natural, as described by Kohli, J., *Mol. Gen. Genet.* 182:430-439; or synthesized, as described by Pettersson, R.F. *Gene* 24:15-27 (1983).

(viii) Selectable Marker

Additionally, it is preferred that the cloning vector contains a selectable marker, such as a drug resistance marker or other marker which causes expression of a selectable trait by the host microorganism. In one embodiment of the present invention, the gene for ampicillin resistance is included in the vector while, in other plasmids, the gene for tetracycline resistance or the gene for chloramphenicol resistance is included.

Such a drug resistance or other selectable marker is intended, in part to facilitate in the selection of transformants. Additionally, the presence of such a selectable marker in the cloning vector may be of use in keeping contaminating microorganisms from multiplying in the culture medium. In this embodiment, a purification of the transformed host microorganisms would be obtained by culturing the microorganisms under conditions which require the induced phenotype for survival.

The operational elements as discussed herein are routinely selected by those of ordinary skill in the art in light of prior literature and the teachings contained herein. General examples of these operational

elements are set forth in B. Lewin, Genes, Wiley & Sons, New York (1983). Various examples of suitable operational elements may be found on the vectors discussed above and may be elucidated through review of the publications discussing the basic characteristics of the aforementioned vectors.

Upon synthesis and isolation of all necessary and desired component parts of the above-discussed vector, the vector is assembled by methods generally known to those of ordinary skill in the art. Assembly of such vectors is believed to be within the duties and tasks performed by those with ordinary skill in the art and, as such, is capable of being performed without undue experimentation. For example, similar DNA sequences have been ligated into appropriate cloning vectors, as set forth by Maniatis et al. in Molecular Cloning, Cold Spring Harbor Laboratories (1984).

In construction of the cloning vectors of the present invention, it should additionally be noted that multiple copies of the DNA sequence and its attendant operational elements may be inserted into each vector. In such an embodiment, the host organism would produce greater amounts per vector of the desired IL-1 inhibitor. The number of multiple copies of the DNA sequence which may be inserted into the vector is limited only by the ability of the resultant vector, due to its size, to be transferred into and replicated and transcribed in an appropriate host cell.

(b) Other Microorganisms

Vectors suitable for use in microorganisms other than E. coli are also contemplated for this invention. Such vectors are described in Table 1. In addition, certain preferred vectors are discussed below.

25

30

35

40

45

50

55

TABLE 1

HOSTS	REGULATED PROMOTERS	INDUCER	TRANSCRIPTION TERMINATOR	MSHA STABILIZATION	START SITE & LEADER PEPTIDE	MARKER	RS BINDING SITE
<i>E. coli</i>	Lac ¹ , Tac ² Lac ³ pl Trp ⁵	IPTG increased temperature IAA addition or tryptophan depletion	rrnB ⁶ rrnC ⁷	ompA ⁸ lambda Int ⁹ trp ¹⁰	bla ¹¹ ompA ¹² pho ¹³	ampicillin ¹⁴ tetracycline ^{14,15} chloramphenicol ¹⁶	
<i>Bacillus</i>	"alpha amylase ¹⁷ "subtilisin ¹⁸ "p-63 ¹⁹ spac-126	IPTG	<i>E. coli</i> { ²⁰ rrn BT.3 ²⁰		B.amy neutral protease ²¹ B.amy alpha-amylase ²² B.subt. subtilisin ²³	Kan ^r 24 Cam ^r 25	B.amy neural protease B.amy alpha-amylase ²²
<i>Pseudo-</i> <i>monas</i>	Trp ²⁷ (<i>E. coli</i>) Lac(<i>E. coli</i>) Tac(<i>E. coli</i>)	IAA addition, or tryptophan depletion IPTG			phospholipase C ²⁸ exotoxin A ²⁹	sulfonamide ³⁰ streptomycin ³⁰	Trp (<i>E. coli</i>)
<i>Yeast</i>	Ga ¹ , ³¹ 10 ³² Adh ³³ , 11 ³⁴ Pho 5	Glucose depletion and galactose Glucose depletion Phosphate depletion	Cyc 1 Una Alpha factor Sac 2		Invertase ³⁶ Acid phosphatase ³⁶ Alpha Factor	Ura ³⁷ Leu ³⁸ His ³ Tap 1	
*non-regulated							

1. Backman, K., Ptashne, M. and Gilbert, W. Proc. Natl. Acad. Sci. USA 73, 4174-4178 (1976).
2. de Boer, H.A., Comstock, L.J., and Vasser, M. Proc. Natl. Acad. Sci. USA 80, 21-25 (1983).
3. Shimatake, H. and Rosenberg, M. Nature 292, 128-132 (1981).
4. Derom, C., Gheysen, D. and Fiers, W. Gene 17, 45-54 (1982).
5. Hallewell, R.A. and Emtage, S. Gene 9, 27-47 (1980).
6. Brosius, J., Dull, T.J., Sleeter, D.D. and Noller, H.F. J. Mol. Biol. 148 107-127 (1981).
7. Normanly, J., Ogden, R.C., Horvath, S.J. and Abelson, J. Nature 321, 213-219 (1986).
8. Belasco, J.G., Nilsson, G., von Gabain, A. and Cohen, S.N. Cell 46, 245-251 (1986).
9. Schmeissner, U., McKenney, K., Rosenberg M. and Court, D. J. Mol. Biol. 176, 39-53 (1984).
10. Mott, J.E., Galloway, J.L. and Platt, T. EMBO J. 4, 1887-1891 (1985).
11. Koshland, D. and Botstein, D. Cell 20, 749-760 (1980).
12. Movva, N.R., Kakamura, K. and Inouye, M. J. Mol. Biol. 143, 317-328 (1980).
13. Surin, B.P., Jans, D.A., Fimmel, A.L., Shaw, D.C., Cox, G.B. and Rosenberg, H. J. Bacteriol. 157, 772-778 (1984).
14. Sutcliffe, J.G. Proc. Natl. Acad. Sci. USA 75, 3737-3741 (1978).
15. Peden, K.W.C. Gene 22, 277-280 (1983).
16. Alton, N.R. and Vapnek, C. Nature 292, 864-869 (1979).
17. Yang, M., Galizzi, A., and Henner, D. Nuc. Acids Res. 11(2), 237-248 (1983).
18. Wong, S.-L., Price, C.W., Goldfarb, D.S., and Doi, R.H. Proc. Natl. Acad. Sci. USA 81, 1184-1188 (1984).
19. Wang, P.-Z., and Doi, R.H. J. Biol. Chem. 251, 8619-8625, (1984).

20. Lin, C.-K., Quinn, L.A. Rodriguez, R.L. J. Cell Biochem. Suppl. (9B), p. 198 (1985).
- 5 21. Vasantha, N., Thompson, L.D., Rhodes, C., Banner, C., Nagle, J., and Filpula, D. J. Bact. 159(3), 811-819 (1984).
22. Palva, I., Sarvas, M., L htovaara, P., Sibazkov, M., and Kaariainen, L. Proc. Natl. Acad. Sci. USA 79, 5582-5586
10 (1982).
23. Wong, S.-L., Pricee, C.W., Goldfarb, D.S., and Doi, R.H. Proc. Natl. Acad. Sci. USA 81, 1184-1188 (1984).
- 15 24. Sullivan, M.A., Yasbin, R.E., and Young, F.E. Gene 29, 21-46 (1984).
25. Vasantha, N., Thompson, L.D., Rhodes, C., Banner, C. Nagle, J., and Filula, D. J. Bact. 159(3), 811-819 (1984).
- 20 26. Yansura, D.G. and Henner, D.J. PNAS 81, 439-443 (1984).
27. Gray, G.L., McKeown, K.A., Jones, A.J.S., Seeburg, P.H. and Heyneker, H.L. Biotechnology, 161-165 (1984).
28. Lory, S., and Tai, P.C. Gene 22, 95-101 (1983).
- 25 29. Liu, P.V. J. Infect. Dis. 130 (suppl), 594-599 (1974).
30. Wood, D.G., Hollinger, M.F., nd Tindol, M.B. J. Bact. 145, 1448-1451 (1981).
- 30 31. St. John, T.P. and Davis, R.W. J. Mol. Biol. 152, 285-315 (1981).
32. Hopper, J.E., and Rowe, L.B. J. Biol. Chem. 253, 7566-7569 (1978).
- 35 33. Denis, C.L., Ferguson, J. and Young, E.T. J. Biol. Chem. 258, 1165-1171 (1983).
34. Lutsdorf, L. and Megnet, R. Archs. Biochem. Biophys. 126, 933-944 (1968).
- 40 35. Meyhack, B., Bajwa, N., Rudolph, H. and Hinnen, A. EMBO. J. 6, 675-680 (1982).
36. Watson, M.E. Nucleic Acid Research 12, 5145-5164 (1984).
- 45 37. Gerband, C. and Guerineau, M. Curr. Genet. 1, 219-228 (1980).
38. Hinnen, A., Hicks, J.B. and Fink, G.R. Proc. Natl. Acad. Sci. USA 75, 1929-1933 (1978).
- 50 39. Jabbar, M.A., Sivasubramanian, N. and Nayak, D.P. Proc. Natl. Acad. Sci. USA 82, 2019-2023 (1985).

55 (i) Pseudomonas Vectors

Sev ral vector plasmids which autonomously replicate in a broad rang of Gram negative bacteria ar pr f rred for use as cloning vehicles in h sts of th genus Pseudomonas. Certain of these ar described by

Tait, R.C., Close, T.J., Lundquist, R.C., Hagiya, M., Rodriguez, R.L., and Kado, C.I. In *Biotechnology*, May, 1983, pp. 269-275; Panopoulos, N.J. in *Genetic Engineering in the Plant Sciences*, Praeger Publishers, New York, N.Y., pp. 163-185 (1981); and Sakaguchi, K. in *Current Topics in Microbiology and Immunology* 96:31-45 (1982).

One particularly preferred construction would employ the plasmid RSF1010 and derivatives thereof as described by Bagdasarian, M., Bagdasarian, M.M., Coleman, S., and Timmis, K.N. in *Plasmids of Medical, Environmental and Commercial Importance*, Timmis, K.N. and Puhler, A. eds., Elsevier/North Holland Biomedical Press (1979). The advantages of RSF1010 are that it is relatively a small, high copy number plasmid which is readily transformed into and stably maintained in both *E. coli* and *Pseudomonas* species. In this system, it would be preferred to use the Tac expression system as described for *Escherichia*, since it appears that the *E. coli* trp promoter is readily recognized by *Pseudomonas* RNA polymerase as set forth by Sakaguchi, K. in *Current Topics in Microbiology and Immunology* 96:31-45 (1982) and Gray, G.L., McKeown, K.A., Jones, A.J.S., Seeburg, P.H., and Heyneker, H.L. in *Biotechnology*, Feb. 1984, pp. 161-165. Transcriptional activity may be further maximized by requiring the exchange of the promoter with, e.g., an *E. coli* or *P. aeruginosa* trp promoter. Additionally, the lacI gene of *E. coli* would also be included in the plasmid to effect regulation.

Translation may be coupled to translation initiation for any of the *Pseudomonas* proteins, as well as to initiation sites for any of the highly expressed proteins of the type chosen to cause intracellular expression of the inhibitor.

In those cases where restriction minus strains of a host *Pseudomonas* species are not available, transformation efficiency with plasmid constructs isolated from *E. coli* are poor. Therefore, passage of the *Pseudomonas* cloning vector through an *r⁻ m⁺* strain of another species prior to transformation of the desired host, as set forth in Bagdasarian, M., et al., *Plasmids of Medical, Environmental and Commercial Importance*, pp. 411-422, Timmis and Puhler eds., Elsevier/North Holland Biomedical Press (1979), is desired.

(ii) *Bacillus* Vectors

Furthermore, a preferred expression system in hosts of the genus *Bacillus* involves using plasmid pUB110 as the cloning vehicle. As in other host vector systems, it is possible in *Bacillus* to express the IL-1i of the present invention: as either an intracellular or a secreted protein. The present embodiments include both systems. Shuttle vectors that replicate in both *Bacillus* and *E. coli* are available for constructing and testing various genes as described by Dubnau, D., Gryczan, T., Contente, S., and Shivakumar, A.G. in *Genetic Engineering*, Vol. 2, Setlow and Hollander eds., Plenum Press, New York, New York, pp. 115-131 (1980). For the expression and secretion of the IL-1i from *B. subtilis*, the signal sequence of alpha-amylase is preferably coupled to the coding region for the protein. For synthesis of intracellular inhibitor, the portable DNA sequence will be translationally coupled to the ribosome binding site of the alpha-amylase leader sequence.

Transcription of either of these constructs is preferably directed by the alpha-amylase promoter or a derivative thereof. This derivative contains the RNA polymerase recognition sequence of the native alpha-amylase promoter but incorporates the lac operator region as well. Similar hybrid promoters constructed from the penicillinase gene promoter and the lac operator have been shown to function in *Bacillus* hosts in a regulatable fashion as set forth by Yansura, D.G. and Henner in *Genetics and Biotechnology of Bacilli*, Ganesan, A.T. and Hoch, J.A., eds., Academic Press, pp. 249-263 (1984). The lacI gene of *E. coli* would also be included in the plasmid to effect regulation.

(iii) *Clostridium* Vectors

One preferred construction for expression in *Clostridium* is in plasmid pJU12, described by Squires, C.H. et al., in *J. Bacteriol.* 159:465-471 (1984), transformed into *C. perfringens* by the method of Heefner, D.L. et al., as described in *J. Bacteriol.* 159:460-464 (1984). Transcription is directed by the promoter of the tetracycline resistance gene. Translation is coupled to the Shine-Dalgarno sequences of this same tet^r gene in a manner strictly analogous to the procedures outlined above for vectors suitable for use in other hosts.

(iv) Yeast Vectors

Maintenance of foreign DNA introduced into yeast can be effected in several ways as described by Botstein, D. and Davis, R.W. in *Methods in Enzymology*, Vol. 65, Academic Press, New York, 1980, pp. 475-506.

Laboratory, Strathern, Jones and Broach, eds., pp. 607-636 (1982). One preferred expression system for use with host organisms of the genus Saccharomyces harbors the IL-1 gene on the 2 micron plasmid. The advantages of the 2 micron circle include relatively high copy number and stability when introduced into cir⁻ strains. These vectors preferably incorporate the replication origin and at least one antibiotic resistance marker from pBR322 to allow replication and selection in E. coli. In addition, the plasmid will preferably have the two micron sequence and the yeast LEU2 gene to serve the same purposes in LEU2 defective mutants of yeast.

If it is contemplated that the recombinant IL-1 inhibitors will ultimately be expressed in yeast, it is preferred that the cloning vector first be transferred into Escherichia coli, where the vector would be allowed to replicate and from which the vector would be obtained and purified after amplification. The vector would then be transferred into the yeast for ultimate expression of the IL-1 inhibitor.

(c) Mammalian Cells

The cDNA for the IL-1 inhibitor will serve as the gene for expression of the inhibitor in mammalian cells. It should have a sequence that will be efficient at binding ribosomes such as that described by Kozak, in Nucleic Acids Research 15:8125-8132 (1987) and should have coding capacity for a leader sequence (see section 3(a)(vi)) to direct the mature protein out of the cell in a processed form. The DNA restriction fragment carrying the complete cDNA sequence can be inserted into an expression vector which has a transcriptional promoter and a transcriptional enhancer as described by Guarente, L. in Cell 52:303-305 (1988) and Kadonaga, J.T. et al., in Cell 51:1079-1090 (1987). The promoter may be regulatable as in the plasmid pMSG (Pharmacia Cat. No. 27450601) if constitutive expression of the inhibitor is harmful to cell growth. The vector should have a complete polyadenylation signal as described by Ausubel, F.M. et al. in Current Protocols in Molecular Biology, Wiley (1987) so that the mRNA transcribed from this vector is processed properly. Finally, the vector will have the replication origin and at least one antibiotic resistance marker from pBR322 to allow replication and selection in E. coli.

In order to select a stable cell line that produces the IL-1 inhibitor, the expression vector can carry the gene for a selectable marker such as a drug resistance marker or carry a complementary gene for a deficient cell line, such as a dihydrofolate reductase (dhfr) gene for transforming a dhfr⁻ cell line as described by Ausubel et al., supra. Alternatively, a separate plasmid carrying the selectable marker can be cotransformed along with the expression vector.

4. Host Cells/Transformation

The vector thus obtained is transferred into an appropriate host cell. These host cells may be microorganisms or mammalian cells.

(a) Microorganisms

It is believed that any microorganism having the ability to take up exogenous DNA and express those genes and attendant operational elements may be chosen. After a host organism has been chosen, the vector is transferred into the host organism using methods generally known to those of ordinary skill in the art. Examples of such methods may be found in Advanced Bacterial Genetics by R. W. Davis et al., Cold Spring Harbor Press, Cold Spring Harbor, New York, (1980). It is preferred, in one embodiment, that the transformation occurs at low temperatures, as temperature regulation is contemplated as a means of regulating gene expression through the use of operational elements as set forth above. In another embodiment, if osmolar regulators have been inserted into the vector, regulation of the salt concentrations during the transformation would be required to insure appropriate control of the foreign genes.

It is preferred that the host microorganism be a facultative anaerobe or an aerobe. Particular hosts which may be preferable for use in this method include yeasts and bacteria. Specific yeasts include those of the genus Saccharomyces, and especially Saccharomyces cerevisiae. Specific bacteria include those of the genera Bacillus, Escherichia, and Pseudomonas, especially Bacillus subtilis and Escherichia coli. Additional host cells are listed in Table I, supra.

(b) Mammalian Cells

The vector can be introduced into mammalian cells in culture by several techniques such as calcium phosphate-DNA coprecipitation, electroporation, or protoplast fusion. The preferred method is coprecipitation

with calcium phosphate as described by Ausubel et al., supra.

Many stable cell types exist that are transformable and capable of transcribing and translating the cDNA sequence, processing the precursor IL-1i and secreting the mature protein. However, cell types may be variable with regard to glycosylation of secreted proteins and post-translational modification of amino acid residues, if any. Thus, the ideal cell types are those that produce a recombinant IL-1 inhibitor identical to the natural molecule.

5. Culturing Engineered Cells

The host cells are cultured under conditions appropriate for the expression of the IL-1 inhibitor. These conditions are generally specific for the host cell, and are readily determined by one of ordinary skill in the art in light of the published literature regarding the growth conditions for such cells and the teachings contained herein. For example, Bergey's Manual of Determinative Bacteriology, 8th Ed., Williams & Wilkins Company, Baltimore, Maryland contains information on conditions for culturing bacteria. Similar information on culturing yeast and mammalian cells may be obtained from Pollack, R. Mammalian Cell Culture, Cold Spring Harbor Laboratories (1975).

Any conditions necessary for the regulation of the expression of the DNA sequence, dependent upon any operational elements inserted into or present in the vector, would be in effect at the transformation and culturing stages. In one embodiment, cells are grown to a high density in the presence of appropriate regulatory conditions which inhibit the expression of the DNA sequence. When optimal cell density is approached, the environmental conditions are altered to those appropriate for expression of the DNA sequence. It is thus contemplated that the production of the IL-1 inhibitor will occur in a time span subsequent to the growth of the host cells to near optimal density, and that the resultant IL-1 inhibitor will be harvested at some time after the regulatory conditions necessary for its expression were induced.

6. Purification

(a) IL-1i Produced From Microorganisms

In a preferred embodiment of the present invention, the recombinant IL-1 inhibitor is purified subsequent to harvesting and prior to assumption of its active structure. This embodiment is preferred as the inventors believe that recovery of a high yield of re-folded protein is facilitated if the protein is first purified. However, in one preferred, alternate embodiment, the IL-1 inhibitor may be allowed re-fold to assume its active structure prior to purification. In yet another preferred, alternate embodiment, the IL-1 inhibitor is present in its re-folded, active state upon recovery from the culturing medium.

In certain circumstances, the IL-1 inhibitor will assume its proper, active structure upon expression in the host microorganism and transport of the protein through the cell wall or membrane or into the periplasmic space. This will generally occur if DNA coding for an appropriate leader sequence has been linked to the DNA coding for the recombinant protein. If the IL-1 inhibitor does not assume its proper, active structure, any disulfide bonds which have formed and/or any noncovalent interactions which have occurred will first be disrupted by denaturing and reducing agents, for example, guanidinium chloride and beta-mercaptoethanol, before the IL-1 inhibitor is allowed to assume its active structure following dilution and oxidation of these agents under controlled conditions.

For purification prior to and after refolding, some combination of the following steps is preferably used: anion exchange chromatography (MonoQ or DEAE-Sephacrose), gel filtration chromatography (superose), chromatofocusing (MonoP), and hydrophobic interaction chromatography (octyl or phenyl sepharose). Of particular value will be antibody affinity chromatography using the IL-1i-specific monoclonal antibodies (described in Example 3).

50 (b) IL-1i Produced from Mammalian Cells

IL-1i produced from mammalian cells will be purified from conditioned medium by steps that will include ion exchange chromatography and immunoaffinity chromatography using monoclonal antibodies described in Example 3. It will be apparent to those skilled in the art that various modifications and variations can be made in the processes and products of the present invention. Thus, it is intended that the present invention cover the modifications and variations of this invention provided they come within the scope of the appended claims and their equivalents.

It is to be understood that application of the teachings of the present invention to a specific problem or environment will be within the capabilities of one having ordinary skill in the art in light of the teachings contained herein. Examples of the products of the present invention and representative processes for their isolation and manufacture appear in the following.

5 The following examples illustrate various presently preferred embodiments of the present invention.

EXAMPLES

Example 1 - Protein Preparation

10

A. Materials

Hank's Balanced Salt Solution (HBSS) and RPMI were purchased from Mediatech, Washington, D.C. Lymphoprep was obtained from Accurate Chemical and Scientific Corp., Westbury, N.Y. Human IgG, MTT, rabbit anti-prostaglandin E₂ antiserum, ammonium bicarbonate, dithiothreitol, complete and incomplete Freund's adjuvants, hypoxanthine, aminopterin, and thymidine were purchased from Sigma Chemical Co., St. Louis, Missouri. C3H/HeJ mice were purchased from Jackson Labs, Bar Harbor, Maine. BALB/c mice and P3 myeloma cells were obtained from Drs. John Kappler and Philippa Marrack at the National Jewish Center for Immunology and Respiratory Medicine (NJC/IRM), Denver, Colorado. Recombinant human IL-1 was obtained from Cistron Biotechnology, Pine Brook, N.J. Purified phytohemagglutinin was purchased from Wellcome Diagnostics, Research Triangle Park, N.C. Human foreskin fibroblasts from primary cultures were obtained from Dr. Richard Clark at the NJC/IRM, Denver, Colorado. Monoclonal mouse anti-rabbit IgG antibodies were purchased from AIA reagents, Aurora, Colorado. Low methionine RPMI was made using a Select-Amine kit from GIBCO Laboratories, Grand Island, N.Y. [³⁵S]-methionine, diphenyloxazole, and [¹⁴C]-iodoacetic acid were obtained from DuPont-NEN, Chicago, Illinois. Fetal calf serum was purchased from HyClone Laboratories, Logan, Utah. Mono Q and Superose 12 columns were purchased from Pharmacia, Inc., Piscataway, N.J. C4-reversed phase columns were obtained from Synchrom, Inc., Lafayette, Indiana. C8-reversed phase columns were obtained from Applied Biosystems, Inc., Foster City, California. Acetonitrile and polyethylene glycol 8000 were purchased from J.T. Baker Chemical Co., Phillipsburg, N.J. Trifluoroacetic acid and guanidine hydrochloride were obtained from Pierce Chemicals, Rockford, Illinois. Endoproteinase Lys C was obtained from Boehringer Mannheim Biochemicals, Indianapolis, Indiana. The microtitering plates used for PGE₂ ELISA were Nunc-Immuno Plate I obtained from Intermountain Scientific Corporation, Bountiful, Utah. The plates used for hybridoma production were from Costar, Cambridge, Massachusetts.

35

B. Generation of Monocyte IL-1 Inhibitor

Human leukocytes were obtained from normal donors by leukapheresis, resuspended in Hank's balanced salt solution (HBSS) at 1 part packed cells to 1 part HBSS, underlaid with Lymphoprep and spun at 400 xg for 30' at room temperature. The mononuclear fraction was taken (typically 4-5 x 10⁸ cells were obtained per donor), washed in HBSS without Ca⁺⁺ or Mg⁺⁺, suspended in serum-free RPMI and plated on petri dishes coated with normal human IgG made LPS free by chromatography over Sephadex G200 (6 x 10⁷ cells in 10ml per 100 mm dish). All reagents contained less than 10 pg/ml LPS. The cells were cultured 24-48 hr, and the resulting conditioned medium constituted the crude IL-1 inhibitor (IL-1i) supernatant. Typically, the cells from one donor yielded 700-900 ml crude IL-1i supernatant.

45

C. Assays for the IL-1 Inhibitor

Two IL-1 assays have been used routinely to detect the IL-1i. Thymocytes (1 x 10⁶ cells from 4 to 6 week old C3H/HeJ mice) respond to 1.0 unit/ml of recombinant human IL-1 plus 1 ug/ml phytohemagglutinin by proliferating half-maximally, as measured by ³H-thymidine incorporation or uptake of the tetrazolium salt MTT (Mosmann, T., J. Immunol. Method, 65:55-61 (1983)) after three days of stimulation. Crude IL-1i supernatant fully inhibits this proliferative response at a 1/10 dilution. Human dermal fibroblasts (1 x 10⁵ cells per well in a 96 well plate) typically respond to 0.5 units/ml recombinant human IL-1 by secreting, at 6 hours of stimulation, approximately 50,000 pg/ml PGE₂ that can be measured by ELISA. This assay is as sensitive to IL-1i as is the thymocyte assay.

55

D. Metabolic Labeling of the IL-1 Inhibitor

The IL-1i was metabolically labeled by culturing mononuclear leukocytes for 48 hours on IgG-coated plates (as described in B) in serum-free RPMI containing only 0.75 ug/ml cold methionine (15ug/ml is normal) and to which was added to 0.5 mCi ³⁵S-methionine (1151 Ci/mmol per 10⁷ cells. Control labelings were performed identically except that the plates were coated with fetal calf serum rather than IgG. Assays on such control supernatants showed that very little IL-1i was secreted when the cells were cultured on fetal calf serum-coated plates.

E. Purification of the IL-1 Inhibitor Protein

Crude IL-1i supernatants were made 1.0 M in sodium chloride, incubated on ice for 1 hour and centrifuged at 10,000 rpm for 15 minutes. The supernatants, which contained all of the inhibitor activity but only 20% of the initial protein, were then dialyzed extensively at 4°C versus 0.025M Tris, pH 7.6 containing 0.1% sucrose (the A buffer) for gradient fractionation of proteins on a Mono Q anion exchange column. Following dialysis the inhibitor-containing solutions were recentrifuged at 10,000 rpm for 15 minutes and then passed through 0.22u nylon filters. The supernatants were typically combined with 10 ml of similarly prepared supernatant from a metabolic labeling and loaded onto Mono Q-Superose (Pharmacia FPLC) columns with bed volumes of either 1.0 ml or 8.0 ml, washed with A buffer until the OD₂₈₀ of the effluent returned to baseline, and carefully chromatographed using a linear sodium chloride gradient (0.025M to .10M) in buffer A. Column fractions were collected and analyzed for radioactivity and bioactivity. Samples of each fraction were also run on reduced 12.5% SDS-PAGE, silver stained, permeated with diphenyloxazole, dried and put onto film to obtain autoradiographic data. Figure 1a shows the protein profile of the Mono Q chromatography of 40 ml crude IL-1i supernatant mixed with 3 ml of metabolically labeled IL-1i supernatant. Superimposed are the amount of radioactivity found in 50 µl of each fraction as well as the IL-1i bioactivity as measured in the PGE₂-production assay. Two major and one minor radioactive species are shown that perfectly correlate with three peaks of bioactivity. Figure 1b shows the similar chromatography of 15 ml of crude IL-1i supernatant mixed with 3 ml of supernatant from monocytes metabolically labeled on plates coated with fetal calf serum (FCS) rather than IgG. The levels of the three radioactive species discussed above are markedly diminished. Figure 2a shows silver stained gels run on the fractions from the regions of interest in the chromatographies shown in Figures 1a and 1b. Note that the fractions of peak radioactivity and bioactivity in Figure 1a (fractions 52 and 59) both show a major band at 22 Kd (marked with arrows) on SDS-PAGE. The third species (fraction 48 in Figure 1a) shows a band at 20kD on SDS-PAGE. Gel filtration experiments on crude IL-1i have shown that the active molecule has a molecular weight of 18-25 Kd. Figure 2b is an autoradiogram of the gels shown in Figure 2a. It can be readily seen that the protein bands at 20 and 22 Kd are the major radioactive species in those fractions.

Summarizing these results, we have shown that the metabolic labeling of monocytes plated on petri dishes coated with IgG results in radioactive species that are only poorly produced if the cells are plated on dishes coated with FCS. These induced radioactive species perfectly co-chromatograph with several species of IL-1i bioactivity on Mono Q, and gels and resulting autoradiograms show that the three major induced molecules are proteins of the predicted molecular weight for IL-1i.

The IL-1i molecules were further purified for sequencing in two ways. First, Mono Q fractions with peak bioactivity and radioactivity were loaded onto a C4-reversed phase column and eluted with an H₂O/0.1%TFA: acetonitrile/0.1%TFA gradient. Since the IL-1i molecule was trace labeled, samples from each fraction were directly counted for radioactivity and were also analyzed by SDS-PAGE followed by autoradiography. Figure 3a shows such a chromatograph with the radioactivity pattern superimposed. The silver stained gels run on samples from each fraction (Figure 3b) and subsequent autoradiograms of the gels (Figure 3c) show that the IL-1i molecule is found in fractions 32-36. These fractions were dried down and sequenced. Alternatively, the peak Mono Q fractions were dried by Speed Vac, resuspended in 0.4 ml 0.05 M NH₄HCO₃ and directly chromatographed two times on a 10 X 300mm Superose 12 gel filtration column (Pharmacia FPLC) equilibrated in the same buffer, as shown in Figs. 4a and 4b. Fractions were collected and samples of each were tested for radioactivity and bioactivity and were analyzed by silver stained and autoradiographed SDS-PAGE. Appropriate fractions were then dried on a speed vac and sequenced.

Example 2

Proposed Sequencing of the IL-1 Inhibitor

- 5 Prior to sequencing, samples were dissolved in 6 M guanidine-HCl, pH 8.6, reduced for 4 hours at 37°C under N₂ with 100-fold molar excess dithiothreitol over protein, and alkylated for 1 hour with 400-fold excess ¹⁴C-iodoacetic acid. In that case, the reactions would be desalted on a C8-reversed phase column, eluted, and partially dried. N-terminal sequences will be determined using an Applied Biosystems Protein Sequencer. To obtain internal sequences, samples which may have been reduced and alkylated would be
10 digested with cyanogen bromide or proteolytic enzymes using methods known to those of ordinary skill in the art. Reactions will be dried, dissolved in 0.1% TFA/H₂O, and peptides will be separated using a C8-reverse phase column.

Example 3

Purification and Sequencing of the Species of IL-1 Inhibitors

A. IL-1i-X, IL-1i-a and IL-1i-b Species

- 20 The Mono Q purification of IL-1i resolves the biological activity into three major species, as shown in Figure 1a and described in Example 1, where the peak fractions for this activity are 48, 52, and 59. SDS-PAGE on samples of these fractions, as shown in Figure 2a, reveal pertinent species at 20 kD, 22 kD, and 22kD, respectively. Western analysis of such gels, using the mouse antisera discussed in Example 4 below, stains all three of these species. When IL-1i is prepared from cells metabolically labeled with ³⁵S-methionine, during growth on plates coated with IgG, each of these bands is radioactive (as shown in Figure
25 2b), the autoradiogram of the above-mentioned gel). Based on the logic discussed in Example 1, namely that parallel cells incubated in a non-inducing condition do not produce the IL-1, bioactivity and do not produce these radioactive bands, we can conclude that these three species account for the biological activity. We have tentatively named these species IL-1i-X, IL-1i-a, and IL-1i-b, respectively.

B. Purification and Sequencing of IL-1i-X

- Mono Q fractions containing IL-1i-X and/or IL-1i-a were further purified by reversed-phase HPLC chromatography on a Synchropak RP-4 (C4) column, and radioactive species were submitted for sequence
35 analysis. Numerous attempts at directly sequencing RP-HPLC-purified IL-1i-a and IL-1i-b have failed, suggesting that they are chemically blocked at their N-termini. However, one preparation of IL-1i-a (IL-1i-aB2p42) yielded the following sequence:

40 1 5 10 15 20
 B P S G R K S S K M Q A F _ I L D V N Q

- and subsequent preparations of IL-1i-X, similarly purified by C4 RP-HPLC, have produced the same
45 sequence

50 1 5 10 15 20
PrepKxF24 _ _ _ _ _ M Q A F _ I L _ V N _ K _ F
 and
PrepKxF23 B P _ _ B K _ L K M Q A F _ I

- These are obviously part of the sequence found in the initial attempt at sequencing IL-1i-a. It is the
55 inventors' conclusion that the sequence data shown is the N-terminus of the 20 kD species called IL-1i-X.

In these and all subsequent sequences an underlined position indicates either an inability to identify a residue or that ambiguity exists with respect to the residue identified. When two or more residues are put in one position, it indicates that more than one amino acid was detected at that sequencing step, and the more

likely correct residue is on top.

C. Generation, Purification, and Sequencing of Peptides of IL-1i-a and IL-1i-b

5 Since IL-1i-a and IL-1i-b are apparently chemically blocked at their N-termini, peptides of each were generated by endoprotease digestion. Specifically, Mono Q fractions containing either IL-1i-a or IL-1i-b were passed through a 4.6x250 mm C3-RPHPLC column (Zorbax Protein Plus), an acceptable alternative to the C-4 columns used in all previous experiments. Very gradual gradients (0.2% acetonitrile per minute at 0.5 ml/min) resolved the IL-1i-a (Figure 8a,b) or IL-1i-b (Figure 9a) away from the major contaminating
10 radioactive species, human lysozyme. The identities of the purified species were confirmed by the presence of a single, radioactive, 22 kD protein on SDS-PAGE and subsequent autoradiograms (Figures 8c,d and 9b). The proteins were hand-collected into siliconized glass tubes and to each was added 25 ml of a 0.2% Tween-20 solution. The IL-1i-containing fractions were then reduced in volume on a Speed-Vac to 50 ml, brought up to 300 ml by the addition of 1% NH_4HCO_3 , followed by the addition of 1 mg of endoprotease. In the case of IL-1i-a, the enzyme used was Endoprotease Lys C (Boehringer-Mannheim), while IL-1i-b
15 was cleaved with Endoprotease Asp N (Boehringer-Mannheim). Cleavage was carried out at 37°C for 16 hr, and then the volume of the reaction mix was reduced to 50 ml on a Speed Vac.

In the case of IL-1i-a, the sample was directly chromatographed, whereas the IL-1i-b sample was first reduced by the addition of 5ml of 50 mM dithiothreitol in 2 M Tris, pH 8.0, reacted for 30 min at 37°C, and
20 then carboxymethylated by addition of 1.1 μmole ^3H -iodoacetic acid in 10 ml ethanol (reacted 30 min at 37°C in the dark). Separation of the peptides was performed on a 2.1x250 mm Brownlee Aquapore RP-300 (C8) narrow-bore column at a flow rate of 100 ml/min using a Beckman HPLC outfitted with microbore hardware and microbore-compatible pumps. A 200 min 0-100% linear gradient was used ($\text{H}_2\text{O}/0.1\%$ TFA to acetonitrile/0.1% TFA). The peptide separations are shown in Figures 10 and 11. The sequence information
25 obtained is as follows:

30

35

40

45

50

55

	1	5	10	
RaLysC-41	M	Q	A	F _ I _ D V N Q K
5				
	1	5	10	15 20 25
RaLysC-53	_	F	Y	L _ N N Q L V A _ Y L Q G P N V N L E E Q I D N _ N
	1	5	10	
10	RaLysC-61	_	F	A T I R H V H
	1	5		
15	RaLysC-31	F	Y	F Q E D
	1	5	10	15 20
	RaLysC-37	_	Q	D E T _ L Q L E A N R Q S Q L G E Q
20		1	5	10 15 20
	RaLysC-35	_	_	E T E L Q L E A V _ I T D L L E N
	1	5	10	15 20 25
25	RbAspN-51	D	V	N P I E P Y A R N N Q L V A S Y L Q G P N V N L
	1	5	10	
30	RbAspN-43	D	E	C V N V T K F Y F Q
	1	5	10	15
	RbAspN-39	_	P	S G R K S S E M Q A F R I Q
35		1	5	
	RbAspN-25	D	K	R F A F I R
	1	5	10	
40	RbAspN-30	D	_	E V N H L K K I S

Two of the peptide sequences are obviously related to that which was obtained earlier from IL-1i-X. On 45 of these, RaLysC-41, is an IL-1i-a sequence, and the other, RbAspN-51, is an IL-1i-b sequence, arguing that the three species of IL-1i are at least closely related proteins if not chemically and/or physically modified forms of a single original IL-1i molecule. If the listed sequences are combined, the following composite sequences result:

50

55

Example 4

Preparation of Antibodies Specific For the IL-1 Inhibitor

Ten week old BALB/c mice were injected subcutaneously with IL-1i that was partially purified (400-fold) from crude supernatants by Mono Q-chromatography, dialyzed versus PBS, and emulsified with Complete Freund's Adjuvant. Each mouse received the IL-1i purified from 5 ml of crude supernatant. The mice were boosted every two weeks with an equivalent amount of IL-1i emulsified with Incomplete Freund's Adjuvant, and serum samples were taken from the tails seven days after each boost. Antisera were tested for anti-IL-1i activity by Western analysis of transblots of the immunogen run on SDS-PAGE, as shown in Fig. 5a. Fig. 5b shows that all of the mice were making anti-IL-1i antibodies after three injections of IL-1i.

Since monoclonal antibodies will be of great value in cloning the IL-1 β gene from an expression library, purifying the recombinant IL-1 β protein, and studying the biology of the molecule, we have begun the process of making a battery of monoclonal antibodies specific for IL-1 β . To produce B cell hybridomas, the above mice were injected intravenously with the same amount of IL-1 β in saline 24 hours prior to removal of the spleens. Splenocytes were teased out of the spleens into cold balanced salt solution (BSS), washed two times with BSS, mixed with P3 myeloma cells at a ratio of 2×10^7 P3 cells per 10^8 splenic B cells and spun down. The cells were fused by the dropwise addition of 1 ml of warm, gassed (5% CO $_2$) PEG 6000 (40% polyethylene glycol 6000 : 60% minimal essential medium) to the dry pellet. Fused cells were washed with BSS and resuspended in 10 ml of rich media (10% FBS) containing 2×10^5 peritoneal cells per ml and the pellet was gently broken up using a 10 ml pipet. The volume was adjusted to 20 ml with the addition of more peritoneal cells in media, and the cells were plated out in 96 well plates at 0.1 ml/well. Plates were placed in a gas incubator and treated in the following manner thereafter:

- Day 1 - Add 3x HAT (hypoxanthine, aminopterin, thymidine) in rich medium to a final concentration of 1x
- Day 5 - Change medium, replacing with 200 ul 1x HAT in rich medium
- Day 10 - Begin checking for hybrid growth. Change medium, replacing with 200 ul 1x HAT in rich medium containing 1.5×10^6 peritoneal cells per ml.

When hybrid cells are nearly confluent in a well, supernatants are transferred for testing, and the cells are gently scraped with a pipet tip and transferred to 1 ml culture wells containing 1x HAT in rich medium plus 3×10^6 peritoneal cells per ml.

The supernatants from the confluent wells are tested for anti-IL-1i activity using an ELISA in which partially purified IL-1i (Mono Q-purified material identical to that injected into the mice) is bound to microtitering wells. Normal mouse sera and hyperimmune antisera are used as the negative and positive controls, respectively. Positive supernatants will be retested by ELISA on plates coated with homogeneously purified IL-1i and by immunoprecipitation of purified metabolically labeled IL-1i. Positive cells will then be cloned by limiting dilution and injected into pristane-treated mice for the generation of ascites. Large quantities of IL-1i-specific antibodies can be produced by tissue culture or by massive generation and collection of ascitic fluid in mice. Purification of these antibodies and attachment thereof to insoluble beads will produce affinity adsorbents for the purification of the recombinant IL-1i protein.

Example 5

Cloning the IL-1i cDNA

It was shown that monocytes plated on IgG-coated petri dishes and cultured for 24 hours in the presence of [³⁵S]-methionine produced [³⁵S]-IL-1i which could be identified by its chromatographic properties on Mono Q.

In order to determine when (during the 24 hour period) IL-1i was being produced at a maximal rate, plated monocytes were exposed to [³⁵S]-methionine (pulsed) for a short, two-hour period, at which time a large excess of unlabelled methionine was added and incubated for an additional two hours. The medium was then collected and analyzed for radiolabelled IL-1i. This procedure was applied to monocytes at various times after plating of IgG-coated plates and it was found that exposing monocytes to [³⁵S]-methionine at 15 hours after plating produced the maximal amount of [³⁵S]-IL-1i, indicating that IL-1i mRNA in monocytes was at its maximal level 15 hours after plating on IgG.

Fresh monocytes were then plated on LPS free IgG obtained as in Example 1B. After incubating in RPMI media for 15 hours at 37°C, the cells are washed with phosphate buffered saline then lysed with 4M guanidinium thiocyanate; 25 mM sodium citrate, pH 7, 0.5% sarcosyl, 0.1M 2-mercaptoethanol. Total RNA was then isolated from this lysate by the AGPC method of P. Chomczynski and N. Sacchi described in Analytical Biochemistry, vol. 162, pp. 156-159 (1987).

Poly A⁺ RNA was isolated by oligo dT cellulose chromatography by the method of Aviv, H. and Leder, P. (1972) Proc. Natl. Acad. Sci. (USA) 69:1408-1412 precipitated with ethanol and dissolved to a concentration of 0.38 ug/ul. One microgram of poly A⁺ RNA was used to prepare cDNA according to Gubler, U. and Hoffman, B. J. (1983) Gene 25:263-169.

The cDNA was incorporated into a lambda gt10 expression library using Eco RI linkers from Boehringer Mannheim catalog No. 988448 or New England Bio Lab No. 1070 and instructions provided by these manufacturers.

The resulting library, which contains 10⁶ independent clones, was screened on E. coli Y1090 rk⁻ (Promega Biotec) with an appropriate polyclonal antibody to IL-1i as described previously using screening conditions described by R. A. Young and R. W. Davis [(1983) PNAS 80:1194-1198]. Positive signals will be detected using a biotinylated second antibody (such as goat anti-mouse IgG, Bethesda Research Labs) followed by a streptavidin-alkaline phosphatase conjugate (Bethesda Research Labs), as described by Bayer, E. A. and Wilchek, M. (1979) in Methods in Biochemical Analysis, and Guesdon, J. L. Ternynck, T. and Avrameas, S. (1979) J. Histochem. Cytochem. 27:1131-1138 and according to manufacturer's instructions.

Example 6

Preparation and Sequencing of Gene Encoding IL-1i

cDNA prepared as described in Example 5 was incorporated into the cloning vector lambda GT10. This cDNA was first methylated using EcoRI methylase with S-adenosyl-methionine as the substrate. EcoRI linkers were attached in a ligation reaction, and excess linkers were removed by digestion with EcoRI endonuclease and chromatography on a CL6B spin column. A ligation reaction containing 0.124 ug of linker, size-selected cDNA and 1 ug of EcoRI-cut and phosphatase-treated lambda GT10 was performed, and the products of this ligation reaction were packaged using GIGAPACK GOLD packaging extracts (Stratagen). This yielded a library of 1x10⁷ members.

In order to screen this GT10 library, oligonucleotide (antisense) probes were synthesized based on protein and peptide sequences presented in Example 3. The sequences of the probes and of their

corresponding peptide sequence as follows.

5 Probe #IL111-3 T T ^T_C T A C G T ^T_C C G N A A A ^A_G 5'
Lys Met Gln Ala Phe

10 Probe #IL111-4 T T ^T_C A A ^A_G A T ^A_G A A ^A_G G T ^T_C C T ^T_C C T 5'
Lys Phe Tyr Phe Gln Glu Asp

15 Probe #IL111-5 T A C C A N T G N T T ^T_C A A ^A_G A T ^A_G A A 5'
Met Val Thr Lys Phe Tyr Phe

20 Probe #IL111-6 C T ^A_G C A N T T ^A_G G T ^T_C T T ^T_C T G 5'
Asp Val Asn Gln Lys Thr

25 Probe #IL111-7 T T ^A_G G T ^T_C T T ^T_C T G N A A A ^A_G A T 5'
Asn Gln Lys Thr Phe Tyr

Notes: N = A, G, C, and T

Probe #IL111-3 was ³²P-phosphorylated at its 5' end and used to screen 3x10⁵ plaques of the library. The probe hybridized reproducibly to three plaques, and out of these, one plaque was shown to also hybridize to probe #IL111-4. This plaque, GT10-IL11-2A, was cultivated and the DNA was isolated using
45 Lambdasorb (Promega) according to the manufacturer's instructions. GT10-IL11-2A has been deposited at American Type Culture Collection (ATCC) in Rockville, Maryland under Accession No. 40488. The DNA was digested with EcoRI, divided into five equal aliquots, and electrophoresed on a 1% agarose gel.

After electrophoresis, this gel was stained with ethidium bromide. A photograph of this gel is shown in Figure 12 a. Lanes 6, 8, 10, 12, and 14 contain the five aliquots from the EcoRI digestion. Lane 5 contains a
50 mixture of wild-type lambda DNA cut with HindIII and ØX174 RF DNA cut with HaeIII (New England Biolabs) which are useful as molecular weight markers. Figure 12a shows that GT10-IL11-2A contains an EcoRI fragment that is 1850 base pairs in length.

In order to demonstrate more conclusively that this 1850 bp fragment carries coding sequence for the IL1 inhibitor, a Southern blot was performed as follows. The DNA fragments in the gel shown in Figure 12a
55 were blotted onto nitrocellulose using standard methods. The nitrocellulose was then cut lengthwise into five strips such that each strip contained the DNA from lanes 6, 8, 10, 12, and 14. The strips were then individually hybridized to each of the five oligonucleotide probes (above) which were labeled at the 5' end

were as follows.

LANE	PROBE	TEMPERATURE
6	#IL1i-3	35° C
8	#IL1i-4	42° C
10	#IL1i-5	42° C
12	#IL1i-6	40° C
14	#IL1i-7	35° C

After washing, the strips were lined up and taped together to reform the original nitrocellulose sheet. This was autoradiographed in the presence of an intensifying screen at -70° C for 24 hours. Figure 12b is a photograph of this autoradiograph. It provides evidence that all of the probes hybridize specifically to the 1850 bp fragment, proving that this fragment carries substantial coding sequences for the IL-1 inhibitor.

In order to determine its DNA sequence, GT10-IL1i-2A DNA was digested with EcoRI, electrophoresed on a 1% agarose gel, and the 1850 bp fragment was isolated. This fragment was ligated with EcoRI-digested M13 mp19 and transformed into *E. coli* strain JM109. Transformants were screened by looking for those lacking beta-galactosidase activity. Five such transformants were isolated, single-stranded DNA was prepared, and sequencing was performed according to Sanger et al. The DNA sequence of three of the transformants corresponded to the 3' end of the mRNA, while two transformants provided protein coding sequence.

Figure 14 shows the predicted amino acid sequence.

Example 7

Sequencing GT10-IL-1i-2A and IL-1i

A portion of GT10-IL1i-2A has been sequenced and is set forth in Figure 14. The DNA encodes a protein containing amino acid sequences that are characteristic of IL-1i (nucleotides 99-557). However, it is believed that several modifications may be made to this protein before it is secreted into the extracellular milieu. These modifications may or may not be essential for the protein to have activity as an IL-1i.

GT10-IL1i-2A encodes at least 32 amino acids N-terminal (nucleotides 3-98) to the amino terminus of the form of IL-1i known as X. It is believed that included in these 32 amino acids is a secretory leader sequence that starts at the M encoded by nucleotides 24-26, directs the nascent IL-1i to the extracellular milieu, and is then removed by a leader peptidase, and possibly other peptidases. The extent to which this sequence is removed in forms alpha and beta of IL-1i is presently unknown, but the N-terminus of these forms is thought to be close to that of form X. Removal of the secretory leader sequence is probably required for the protein to have effective IL-1i activity.

Nucleotides 349-351 of GT10-IL1i-2A encode an N residue that is part of a consensus N-glycosylation site. On the basis of their susceptibility to digestion with N-glycanase it is believed that forms alpha and beta of IL-1i are glycosylated. Since form X is not believed to be susceptible to digestion with this enzyme it is believed that it is not glycosylated, although this remains a possibility that could easily be demonstrated by one of ordinary skill in the art of protein sequencing using the information provided here. It is believed that glycosylation at this N residue is not required for the protein to show effective IL-1i activity.

Nucleotides 99-101 of GT10-IL1i-2A encode a P (see Figure 15), but no P has been detected at this position (the N-terminus) of form X of IL-1i. It is possible that this residue has been modified in the mature protein. It is believed that modification of this residue is not essential for effective IL-1i activity.

The presently unknown N-terminus residues of forms alpha and beta are not wholly detectable by Edman degradation and are likely to be modified following removal of some of the N-terminal residues of the protein encoded by GT10-IL1i-2A. It is believed that this modification is not essential for effective IL-1i activity.

Example 8

Expression of Genes Encoding IL-1i in Animal Cells

Animal-cell expression of IL-1i requires the following steps:

a. Construction of an expression vector

b. Choice of a host cell line

c. Introduction of the expression vector into host cells

d. Manipulation of recombinant host cells to increase expression levels of IL-1i

1. IL-1i expression vectors designed for use in animal cells can be of several types including strong constitutive expression constructs, inducible gene constructs, as well as those designed for expression in particular cell types. In all cases promoters and other gene regulatory regions such as enhancers (inducible or not) and polyadenylation signals are placed in the appropriate location in relation to the cDNA sequences in plasmid-based vectors. Two examples of such constructs follow: (1) A construct using a strong constitutive promoter region should be made using the simian virus 40 (SV40) gene control signals in an arrangement such as that found in the plasmid pSV2CAT as described by Gorman et al. in *Mol. Cell Biol.* 2:1044-1051, 1982, specifically incorporated herein by reference. This plasmid should be manipulated in such a way as to substitute the IL-1i cDNA for the chloramphenicol acetyltransferase (CAT) coding sequences using standard molecular biological techniques (Maniatis et al., *supra*), as shown in Fig. 6. (2) An inducible gene construct should be made utilizing the plasmid PMK which contains the mouse metallothionein (MT-1) promoter region (Brinster et al., *Cell* 27:228-231, 1981). This plasmid can be used as a starting material and should be manipulated as shown in Fig. 7 to yield a metal-inducible gene construct.

2. A number of animal cell lines should be used to express IL-1i using the vectors described above to produce active protein. Two potential cell lines that have been well-characterized for their ability to promote foreign gene expression are mouse Ltk⁻ and Chinese hamster ovary (CHO) dhfr⁻ cells, although expression of IL-1i is not limited to these cell lines.

3. Vector DNA should be introduced into these cell lines using any of a number of gene-transfer techniques. The method employed here involves the calcium phosphate-DNA precipitation technique described by S.L. Graham & A.S. van der Eb (*Virology* 52:456-467, 1973) in which the expression vector for IL-1i is co-precipitated with a second expression vector encoding a selectable marker. In the case of Ltk⁻ cell transfection, the selectable marker is a thymidine kinase gene and the selection is as described by Wigler, et al. (*Cell* 16:777-785, 1979) and in the case of CHO dhfr⁻ cells the selectable marker is dihydrofolate reductase (DHFR) whose selection is as described by Ringold et al. in *J. Mol. Appl. Genet.* 1:165-175, 1981.

4. Cells that express the IL-1i gene constructs should then be grown under conditions that will increase the levels of production of IL-1i. Cells carrying the metallothionein promoter constructs can now be grown in the presence of heavy metals such as cadmium which will lead to a 5-fold increased utilization of the MT-1 promoter (Mayo et al., *Cell* 29:99-108) subsequently leading to a comparable increase in IL-1i protein levels. Cells containing IL-1i expression vectors (either SV40- or MT-1-based) along with a DHFR expression vector can be taken through the gene amplification protocol described by Ringold et al. (*J. Mol. Appl. Genet.* 1:165-175, 1981) using methotrexate, a competitive antagonist of DHFR. This leads to more copies of the DHFR genes present in the cells and, concomitantly, increased copies of the IL-1i genes which, in turn, can lead to more IL-1i protein being produced by the cells.

Example 9

Purification of IL-1i From Recombinant Animal Cells

Since the IL-1i are expected to be secreted from cells like the natural material, it is anticipated that the methods described above for purification of the natural protein will allow similar purification and characterization of the recombinant protein.

Example 11

A protein having the sequence:

```
5      M E I X R G L R S H L I T L L L P L F H
      S E T I X Z P S G A K S S K M Q A P R Z
10     W D V N Q K T F Y L R N N Q L V A S Y L
      L G P N V N L E E K I D V U P I E P H A
15     L F L G I H G G K N X L S X V K S G D E
      T R L Q L E A V N I T D L S E N R K G D
20     K R P A F I R S D S G P T T S F E S A A
      X P G W F L X T A M E A O R P V S L T N
25     M P D E G V N V T K F Y F G E D E
```

wherein

X is cysteine, serine or alanine; and

30 Z is arginine or proline

is also included in the invention.

Example 10

35 Sequence of IL-1i

The amino terminal residue of IL-1i has been identified several times by direct protein sequencing as an arginine (R). The result of such sequencing is shown in Example 3. In contrast, the amino terminal residue of IL-1i predicted by the sequence of the cDNA is a proline (P). This amino terminal residue is circled in
40 Figs. 14 and 15. This apparent disagreement between the cDNA sequence and the direct protein sequence can be resolved by assuming that an error in the cDNA sequence was incorporated during the reverse transcriptase-catalyzed synthesis from its mRNA. That is, a CGA (arginine) codon, located on the mRNA where it would code for that amino terminal residue, could have been changed during the reverse-transcriptase reaction to a CCA (proline) codon in the cDNA. This type of reverse transcriptase problem has
45 been reported in the literature before, e.g., by B. D. Clark et al. in Nucleic Acids Research 14:7897 (1986).

The present inventors believe that the correct amino acid sequence of the protein is as predicted by the cDNA except that the amino terminal amino acid is an arginine instead of the proline residue indicated in Figs. 14-15. The inventors contemplate that both DNA sequences and their corresponding peptide sequences fall within the scope of their invention although the amino terminal arginine sequence is
50 preferred.

Claims

Claims for the following Contracting States : AT, BE, CH, DE, FR, GB, GR, IT, LI, LU, NL, SE

- 55 1. An interleukin-1 inhibitor (IL-1i) which comprises the amino acid sequence from position 26 to the end from the following sequence:

5
 10
 15
 20
 25
 30

M E I C R G L R S ¹⁰ H L I T L L L F L F ²⁰ H
 S E T I C (X) P S G ³⁰ R K S S K M Q A F R ⁴⁰ I
 W D V N Q K T F Y ⁵⁰ L R N N Q L V A G Y ⁶⁰ L
 Q G P N V N L E E ⁷⁰ K I D V V P I E P H ⁸⁰ A
 L F L G I H G G K ⁹⁰ M C L S C V K S G D ¹⁰⁰ E
 T R L Q L E A V N ¹¹⁰ I T D L S E N R K Q ¹²⁰ D
 K R F A F I R S ¹³⁰ D S G P T T S F E S A ¹⁴⁰ A
 C P G W F L C T A ¹⁵⁰ M E A D Q P V S L T ¹⁶⁰ N
 M P D E G V M V T ¹⁷⁰ K F Y F Q E D E

35

wherein X is either P = proline or R = arginine.

2. The interleukin-1 inhibitor according to Claim 1, wherein X is a proline.
- 40 3. The interleukin-1 inhibitor according to Claim 1, wherein the X is an arginine.
4. The interleukin-1 inhibitor according to Claims 1 to 3, wherein the inhibitor comprises the amino acid sequence from position 1 to the end of the sequence in Claim 1.
- 45 5. A DNA sequence coding for the interleukin-1 inhibitors of Claims 1 to 4.
6. An isolated DNA sequence, wherein the sequence comprises the following nucleotide sequence from position 99 to position 554:

50

55

10 20 30 40 50 60
 GAATTCGGGCTGCAGTCACAGAATGGAAATCTGCAGAGGGCCTCCGCAGTCACCTAATCA
 M E I C R G L R S H L I

70 80 90 100 110 120
 CTCTCCTCCTCTTCTGTTCCATTTCAGAGACGATCTGCCYACCCTCTGGGAGAAAATCCA
 T L L L F L F H S E T I C (X) P S G R K S

130 140 150 160 170 180
 GCAAGATGCAAGCCTTCAGAATCTGGGATGTTAACCAGAAGACCTTCTATCTGAGGAACA
 S K M Q A F R I W D V N Q K T F Y L R N

190 200 210 220 230 240
 ACCAACTAGTTGCTGGATACTTGCAAGGACCAAATGTCAATTTAGAAGAAAAGATAGATG
 N Q L V A G Y L Q G P H V N L E E K I D

250 260 270 280 290 300
 TGGTACCCATTGAGCCTCATGCTCTGTTCTTGGGAATCCATGGAGGGAAGATGTGCCTGT
 V V P I E P H A L F L G I H G G K M C L

310 320 330 340 350 360
 CCTGTGTCAAGTCTGGTGATGAGACCAGACTCCAGCTGGAGGCAGTTAACATCACTGACC
 S C V K S G D E T R L Q L E A V N I T D

370 380 390 400 410 420
 TGAGCGAGAACAGAAAGCAGGACAAGCGCTTCGCCTTCATCCGCTCAGACAGTGGCCCCA
 L S E N R K Q D K R F A P I R S D S G P

430 440 450 460 470 480
 CCACCAGTTTTGAGTCTGCCGCCTGCCCGGTTGGTTCCTCTGCACAGCGATGGAAGCTG
 T T S F E S A A C P G W F L C T A M E A

490 500 510 520 530 540
 ACCAGCCCGTCAGCCTCACCAATATGCCTGACGAAGGCGTCATGGTCACCAAATTCTACT
 D Q P V S L T N M P D E G V M V T K F Y

550 560 570 580 590 600
 TCCAGGAGGACGAGTAGTACTGCCCAGGCCTGCTGTTCCATTCTTGCAATGGCAAGGACTG
 F Q E D E *

wherein the Y is either C or G which codon codes for a proline or arginine.

7. An isolated DNA sequence, wherein the sequence comprises the nucleotide sequence from position 1 to 554 of the sequence shown in claim 6.
8. The DNA sequence according to Claim 6 or 7, wherein the Y is a C.

9. The DNA sequence according to Claim 6 or 7, wherein the Y is a G.
10. The recombinant-DNA molecule GT10-IL1i-2A being deposited under ATCC 40488.
- 5 11. A recombinant-DNA method for the production of the interleukin-1 receptor antagonist (IL-1i) of Claims 1 to 4 comprising:
- 10 (a) culturing a host cell that includes a vector, said vector including a DNA sequence encoding the IL-1i of any of Claims 1 to 4 and including operational elements needed to express the DNA sequence in the host cell under conditions appropriate for amplification of said vector and expression of the IL-1i; and
- (b) harvesting the IL-1i protein.
12. The method of Claim 11, wherein the IL-1i is permitted to assume an active tertiary structure whereby it possesses IL-1 inhibitory activity.
- 15 13. The method of Claim 11, wherein said DNA sequence is a cDNA.
14. The method of Claim 11, wherein said DNA sequence is a genomic sequence.
- 20 15. The method of Claim 11, wherein said DNA sequence is derived from mammalian cells.
16. The method of Claim 15, wherein said DNA sequence is derived from human monocytes.
17. The method of Claim 11, wherein said host cell is a microorganism.
- 25 18. The method of Claim 17, wherein said microorganism is E. coli.
19. The method of Claim 11, wherein said host cell is a mammalian cell.
- 30 20. The method of Claim 19, wherein said mammalian cell is a CHO cell.
21. The method of Claim 11, wherein said DNA sequence is a synthetic polynucleotide.
- 35 22. A recombinant-DNA method for the production of an interleukin-1 inhibitor (IL-1i) expression vector comprising:
- (a) preparing a DNA sequence encoding the IL-1i of any of Claims 1 to 4; and
- (b) subcloning the DNA sequence into a vector capable of being transformed or transfected into and replicated in a host cell, such vector containing operational elements needed to express the DNA sequence.
- 40

Claims for the following Contracting State : ES

- 45 1. A recombinant DNA method for the production of an interleukin-1 receptor antagonist (IL-1i) comprising the amino acid sequence from position 26 to the end from the following sequence
- 50
- 55

5 M E I C R G L R S H L I T L L L F L F H 20
 S E T I C (X) P S G R K S S K M Q A F R I 40
 10 W D V N Q K T F Y L R N N Q L V A G Y L 60
 15 Q G P N V N L E E K I D V V P I E P H A 80
 20 L F L G I H G G K H C L S C V K S G D E 100
 T R L Q L E A V N I T D L S E N R K Q D 120
 25 K R F A F I R S D S G P T T S F E S A A 140
 30 C P G W F L C T A H E A D Q P V S L T N 160
 35 H P D E G V M V T K F Y F Q E D E 170

wherein X is either P = proline or R = arginine comprising the steps of:

- a) culturing a host cell that includes a vector said vector including a DNA sequence encoding the IL-1i and including operational elements needed to express the DNA sequence in the host cell under conditions appropriate for amplification of said vector and expression of the IL-1i; and
- b) harvesting the IL-1i protein.

2. The method according to claim 1, wherein X is a proline.
3. The method according to claim 1, wherein X is an arginine.
4. The method according to claims 1 to 3, wherein the inhibitor comprises the amino acid sequence from position 1 to the end of the sequence in claim 1.
5. The method of claim 1, wherein the IL-1i is permitted to assume an active tertiary structure whereby it possesses IL-1i inhibitory activity.
6. The method of claim 1, wherein said DNA sequence is a cDNA.
7. The method according to claim 1, wherein said DNA sequence is a genomic sequence.
8. The method of claim 1, wherein said DNA sequence is derived from mammalian cells.

9. The method of claim 8, wherein said DNA sequence is derived from human monocytes.
10. The method of claim 1, wherein said host cell is a microorganism.
- 5 11. The method of claim 10, wherein said microorganism is E. Coli.
12. The method of claim 1, wherein said host cell is a mammalian cell.
13. The method of claim 12, wherein said mammalian cell is a CHO cell.
- 10 14. The method of claim 1, wherein said DNA sequence is a synthetic polynucleotide.
15. A recombinant-DNA method for the production of an interleukin-1 inhibitor (IL-1i) expression vector comprising:
- 15 a) preparing a DNA sequence encoding the IL-1i of any of claims 1 to 4; and
b) subcloning the DNA sequence into a vector capable of being transformed or transfected into and replicated in a host cell, such vector containing operational elements needed to express the DNA sequence.
- 20 16. A method for preparing the recombinant DNA molecule GT10-IL1i-2A being deposited under ATCC 40488 by combining the vector GT10 and a 1,850bp EcoRI fragment which carries a sequence coding for the IL-1i inhibitors disclosed in claims 1-4 in a manner known per se.
- 25 17. A method for preparing a DNA sequence coding for the interleukin-1 inhibitors disclosed in claims 1 to 4 by chemical synthesis or recombinant DNA technology.
18. A method for preparing an isolated DNA sequence, wherein the sequence comprises the following nucleotide sequence from position 99 to position 554:

30

35

40

45

50

55

10 20 30 40 50 60
 GAATTCGGGCTGCAGTCACAGAATGGAAATCTGCAGAGGCTCCGAGTCACCTAATCA
 M E I C R G L R S H L I

70 80 90 100 110 120
 CTCTCCTCCTCTTCCTGTTCCATTTCAGAGACGATCTGCCYACCCTCTGGGAGAAAATCCA
 T L L L F L F H S E T I C (X) P S G R K S

130 140 150 160 170 180
 GCAAGATGCAAGCCTTCAGAATCTGGGATGTTAACCAGAAGACCTTCTATCTGAGGAACA
 S K M Q A P R I W D V N Q K T F Y L R N

190 200 210 220 230 240
 ACCAACTAGTTGCTGGATACTTGCAAGGACCAATGTCAATTTAGAAGAAAAGATAGATG
 N Q L V A G Y L Q G P N V N L E E K I D

250 260 270 280 290 300
 TGGTACCCATTGAGCCTCATGCTCTGTTCTTGGGAATCCATGGAGGGAAGATGTGCCTGT
 V V P I E P H A L F L G I H G G K M C L

310 320 330 340 350 360
 CCTGTGTCAAGTCTGGTGATGAGACCAGACTCCAGCTGGAGGCAGTTAACATCACTGACC
 S C V K S G D E T R L Q L E A V N I T D

370 380 390 400 410 420
 TGAGCGAGAACAGAAAGCAGGACAAGCGCTTCCGCTTCATCCGCTCAGACAGTGGCCCCA
 L S E N R K Q D K R F A P I R S D S G P

430 440 450 460 470 480
 CCACCAGTTTTGAGTCTGCCGCTGCCCGGTTGGTTCTCTGCACAGCGATGGAAGCTG
 T T S F E S A A C P G W F L C T A H E A

490 500 510 520 530 540
 ACCAGCCCGTCAGCCTCACCAATATGCCTGACGAAGGCGTCATGGTCACCAAAATTCTACT
 D Q P V S L T N M P D E G V H V T K F Y

550 560 570 580 590 600
 TCCAGGAGGACGAGTAGTACTGCCCAGGCCTGCTGTTCCATTCTTGTCATGGCAAGGACTG
 F Q E D E *

50 wherein the Y is either C or G which codon codes for a proline or arginine by chemical synthesis or recombinant DNA technology.

19. The method according to claim 18, wherein the sequence comprises the nucleotide type sequence from position 1 to 554 of the sequence shown in claim 18.

20. The method according to claims 18 or 19, wherein the Y is a C.

Patentanspruch

Patentansprüche für folgende Vertragsstaaten : AT, BE, CH, DE, FR, GB, GR, IT, LI, LU, NL, SE

1. Interleukin-1-Inhibitor (IL-1i), umfassend die Aminosäuresequenz von Position 26 bis zum Ende der folgenden Sequenz:

```

10      M E I C R G L R S H L I T L L L F L F H
15      S E T I C (X) P S G R K S S K M Q A F R I
20      W D V N Q K T F Y L R N N Q L V A G Y L
25      Q G P N V N L E E K I D V V P I E P H A
30      L F L G I H G G K H C L S C V K S G C C
35      T R L Q L E A V N I T D L S E N R K Q C
40      K R F A F I R S C S G P T T S F E S A A
45      C P G W F L C T A M E A D Q P V S L T N
50      H P D E G V M V T K F Y F Q E D E

```

wobei X entweder P = Prolin oder R = Arginin ist.

2. Interleukin-1-Inhibitor nach Anspruch 1, wobei X ein Prolin ist.
3. Interleukin-1-Inhibitor nach Anspruch 1, wobei X ein Arginin ist.
4. Interleukin-1-Inhibitor nach einem der Ansprüche 1 bis 3, wobei der Inhibitor die Aminosäuresequenz von Position 1 bis zum Ende der Sequenz in Anspruch 1 umfaßt.
5. DNA-Sequenz, die für die Interleukin-1-Inhibitoren gemäß der Ansprüche 1 bis 4 kodiert.
6. Isolierte DNA-Sequenz, wobei die Sequenz die folgende Nukleotidsequenz von Position 99 bis Position 554 umfaßt:

10 20 30 40 50 60
 GAATTCGGGCTTCAGTCAACAGAAATGGAAATCTGCAGAGGCTCCGCACTCACTTAATCA
 H E I C R G L R S H L I
 5 70 80 90 100 110 120
 CTCTCTCTCTCTCTCTCTCTCAATTCAGAGACCAATCTGCTAACCTCTGGGAGAAAATCA
 T L L L F L F H S E T I C (X) P S G R K S
 10 130 140 150 160 170 180
 GCAAGATGCAAGCTTCAGAAATCTGGGATGTTAACCAAGAGACCTTCTATCTGAGGAACTA
 S K M Q A F R I W D V N Q K T P Y L R N
 190 200 210 220 230 240
 ACCAACTAGTTGCTGGATACTTGCAGGACCAATGTCAATTTAGAAGAAAAGATAGATG
 15 N Q L V A G Y L Q G P N V N L E E K I D
 250 260 270 280 290 300
 TGGTACCCATTGAGCCTCATGCTCTGTTCTTGGGAATCCATGGAGGGGAAGATGTGCTCTGT
 20 V V P I E P H A L F L G I H G G K M C L
 310 320 330 340 350 360
 CCTGTGTCAAGTCTGGTGATGAGACCAAGACTCCAGCTGGAGGCCAGTTAACATCACTGACC
 S C V K S G D E T R L Q L E A V N I T D
 25 370 380 390 400 410 420
 TGAGCGAGAACAGAAAGCAGGACCAAGCGCTTCGCTTCATCCGCTCAGACAGTGGCCCTCA
 L S E N R K Q D K R F A F I R S D S G P
 30 430 440 450 460 470 480
 CCAACCAAGTTTGAGTCTGCGGCTGCCCCGGTTGGTTCTCTGCACAGCGATGGAAAGCTG
 T T S P E S A A C P G W F L C T A H E A
 35 490 500 510 520 530 540
 ACCAGCCCCGTCAGCTTACCAATATGCTTACCAAGGGCTCATGGTCAACCAATTCCTACT
 D Q P V S L T N H P D E G V H V T K F Y
 40 550 560 570 580 590 600
 TCCAGGAGGACCAAGTAGTACTGCCCCAGGCTGCTGTTCAATCTCTGCATGGCAAGGACTG
 F Q E D E

wobei Y entweder C oder G ist, so daß das Kodon für ein Prolin oder Arginin kodiert.

45

7. Isolierte DNA-Sequenz, wobei die Sequenz die Nukleotidsequenz von Position 1 bis Position 554 der in Anspruch 6 gezeigten Sequenz umfaßt.

8. DNA-Sequenz nach Anspruch 6 oder 7, wobei das Y ein C ist.

50

9. DNA-Sequenz nach Anspruch 6 oder 7, wobei das Y ein G ist.

10. Rekombinantes DNA-Molekül GT10-IL1i-2A, hinterlegt unter ATCC 40488.

55

11. Rekombinantes DNA-Verfahren für die Herstellung des Interleukin-1-Rezeptor-Antagonisten (IL-1i) gemäß der Ansprüche 1 bis 4, umfassend:

a) das Kultivieren einer Wirtszelle, die einen Vektor enthält, wobei der Vektor eine DNA-Sequenz

die zum Expressieren der DNA-Sequenz in der Wirtszelle notwendig sind, unter Bedingungen, die zur Amplifikation des Vektors und Expression von IL-1i geeignet sind; und
b) das Ernten des IL-1i-Proteins.

- 5 12. Verfahren nach Anspruch 10, wobei dem IL-1i gestattet wird, eine aktiv Tertiärstruktur anzunehmen, wodurch er IL-1-inhibierende Aktivität besitzt.
13. Verfahren nach Anspruch 11, wobei die DNA-Sequenz eine cDNA ist.
- 10 14. Verfahren nach Anspruch 11, wobei die DNA-Sequenz eine genomische Sequenz ist.
15. Verfahren nach Anspruch 11, wobei die DNA-Sequenz von Säugetierzellen abgeleitet ist.
15. Verfahren nach Anspruch 15, wobei die DNA-Sequenz von humanen Monozyten abgeleitet ist.
- 15 17. Verfahren nach Anspruch 11, wobei die Wirtszelle ein Mikroorganismus ist.
18. Verfahren nach Anspruch 17, wobei der Mikroorganismus E. coli ist.
- 20 19. Verfahren nach Anspruch 11, wobei die Wirtszelle eine Säugetierzelle ist.
20. Verfahren nach Anspruch 19, wobei die Säugetierzelle eine CHO-Zelle ist.
21. Verfahren nach Anspruch 11, wobei die DNA-Sequenz ein synthetisches Polynukleotid ist.
- 25 22. Rekombinantes DNA-Verfahren zum Erzeugen eines Interleukin-1-Inhibitor(IL-1i)-Expressionsvektors, umfassend:
- a) das Herstellen einer DNA-Sequenz, die für den IL-1i gemäß einem der Ansprüche 1 bis 4 kodiert; und
- 30 b) das Subklonieren der DNA-Sequenz in einen Vektor, der in eine Wirtszelle transformiert oder transfiziert werden kann und in der Wirtszelle replizieren kann, wobei der Vektor funktionelle Elemente enthält, die notwendig sind, die DNA-Sequenz zu exprimieren.

Patentansprüche für folgenden Vertragsstaat : ES

- 35 1. Rekombinantes DNA-Verfahren zum Herstellen eines Interleukin-1-Rezeptor-Antagonisten (IL-1i), umfassend die Aminosäuresequenz von Position 26 bis zum Ende der folgenden Sequenz:

5	M	E	I	C	R	G	L	R	S	10	H	L	I	T	L	L	L	F	L	F	20	H
	S	E	T	I	C	(X)	P	S	G	30	R	K	S	S	K	M	Q	A	F	R	40	I
10	W	D	V	N	Q	K	T	F	Y	50	L	R	N	N	Q	L	V	A	G	Y	60	L
15	Q	G	P	N	V	N	L	E	E	70	K	I	D	V	V	P	I	E	P	H	80	A
20	L	F	L	G	I	H	G	G	K	90	M	C	L	S	C	V	K	S	G	D	100	E
25	T	R	L	Q	L	E	A	V	N	110	I	T	D	L	S	E	N	R	K	Q	120	D
30	K	R	F	A	F	I	R	S	D	130	S	G	P	T	T	S	F	E	S	A	140	A
	C	P	G	W	F	L	C	T	A	150	H	E	A	D	Q	P	V	S	L	T	160	N
35	M	P	D	E	G	V	M	V	T	170	K	F	Y	F	Q	E	D	E				

wobei X entweder P = Prolin oder R = Arginin ist,
umfassend die Schritte

- 40 a) des Kultivierens einer Wirtszelle, die einen Vektor enthält, wobei der Vektor eine DNA-Sequenz umfaßt, die für IL-1i kodiert, und funktionelle Elemente umfaßt, die zum Expressieren der DNA-Sequenz in der Wirtszelle notwendig sind, unter Bedingungen, die zur Amplifikation des Vektors und Expression von IL-1i geeignet sind; und
- b) des Erntens des IL-1i-Proteins.
- 45 2. Verfahren nach Anspruch 1, wobei X ein Prolin ist.
3. Verfahren nach Anspruch 1, wobei X ein Arginin ist.
4. Verfahren nach einem der Ansprüche 1 bis 3, wobei der Inhibitor die Aminosäuresequenz von Position 1 bis zum Ende der Sequenz in Anspruch 1 umfaßt.
- 50 5. Verfahren nach Anspruch 1, wobei dem IL-1i gestattet wird, eine aktive T-Zellstruktur anzunehmen, wodurch er IL-1i-inhibierende Aktivität besitzt.
- 55 6. Verfahren nach Anspruch 1, wobei die DNA-Sequenz eine cDNA ist.
7. Verfahren nach Anspruch 1, wobei die DNA-Sequenz eine genomische Sequenz ist.

8. Verfahren nach Anspruch 1, wobei die DNA-Sequenz von Säug tierz llen abgeleitet ist.
9. Verfahren nach Anspruch 8, wobei die DNA-Sequ nz von humanen Monozyten abgeleitet ist.
- 5 10. Verfahr n nach Anspruch 1, wobei die Wirtsz lle ein Mikroorganismus ist.
11. Verfahren nach Anspruch 10, wob i der Mikroorganismus E. coli ist.
12. Verfahren nach Anspruch 1, wobei die Wirtszelle eine Säugetierzelle ist.
- 10 13. Verfahren nach Anspruch 12, wobei die Säugetierzelle eine CHO-Zelle ist.
14. Verfahren nach Anspruch 1, wobei die DNA-Sequenz ein synthetisches Polynukleotid ist.
- 15 15. Rekombinantes DNA-Verfahren zum Erzeugen eines Interleukin-1-Inhibitor(IL-1i)-Expressionsvektors, umfassend:
- a) das Herstellen einer DNA-Sequenz, die für den IL-1i gemäß einem der Ansprüche 1 bis 4 kodiert; und
- b) das Subklonieren der DNA-Sequenz in einen Vektor, der in eine Wirtszelle transformiert oder
- 20 transfiziert werden kann und in einer Wirtszelle replizieren kann, wobei der Vektor funktionell Elemente enthält, die notwendig sind, die DNA-Sequenz zu exprimieren.
16. Verfahren zum Herstellen des rekombinanten DNA-Moleküles GT10-IL1i-2A, das als ATCC 40488 hinterlegt ist, durch Kombinieren des Vektors GT10 und eines 1850 bp EcoRI-Fragmentes, das eine für
- 25 den in den Ansprüchen 1 bis 4 offenbarten IL-1i-Inhibitor kodierende Sequenz trägt, in an sich bekannter Weise.
17. Verfahren zum Herstellen einer für den in den Ansprüchen 1 bis 4 offenbarten Interleukin-1-Inhibitor kodierenden DNA-Sequenz durch chemische Synthese oder rekombinante DNA-Technologie.
- 30 18. Verfahren zum Herstellen einer isolierten DNA-Sequenz, wobei die Sequenz die folgende Nukleotidsequenz von Position 99 bis Position 554 umfaßt:

10 20 30 40 50 60
GAA TCC TCA GTC CAG AAT GGA ATC TCA GAG GCT CCG CAG TCA CTT AAT CA
M E I C R G L R S H L I

70 80 90 100 110 120
CTC CTT CTT TTT CCA TTT CAG AGA CCA TCT GCT ACC CTCT GGG AGA AAT CCA
T L L L P L P H S E T I C (X) P S G R K S

130 140 150 160 170 180
GCA GAT GCA AGCTT CAG AATCT GGG ATG TTA ACC AGA AGA CCTTCT ATCT GAG GAA CA
S K H Q A F R I W D V H Q K T P Y L R N

190 200 210 220 230 240
ACC AACT AGT TGC TCA TACTT GCA AGG ACC AAT GTT CAA TTT AGA AGA AAG ATAG ATG
H Q L V A G Y L Q G P H V H L E E K I D

250 260 270 280 290 300
TGG TACC CATTG AGCTT CAT GCTCT GTT CTT GGG AAT CCA TGG AGG GGA AGAT GTT GCTTGT
V V P I E P H A L F L G I H G G K H C L

310 320 330 340 350 360
CCT GTT GCA AGTCT GGT GAT GAG ACC AGA CTT CCA GCTTGA AGG CAG TTA ACAT CACT GACC
S C V K S G D E T R L Q L E A V H I T D

370 380 390 400 410 420
TGAG CCA GAA CAG AAG CAG GACA AGCG CTT CCGCTT CAT CCG CTT CAG ACA GTT GGG CCA
L S E H R K Q D K R F A P I R S D S G P

430 440 450 460 470 480
CCA CCA GTTT CAG TCT CCG CCGCTT CCG CCG GTT GGTCTTCT CCA CAG CCA TGG AAG CTTG
T T S P E S A A C P G W P L C T A H E A

490 500 510 520 530 540
ACC AGC CCGT CAG CCTT CACC AAT ATG CCTT CAC GAA AGG CTT CAT GTT CACC AAT TCTT ACT
D Q P V S L T N H P D E G V H V T R F Y

550 560 570 580 590 600
TCC AGG AGG ACC AGT AGT ACT CCG CAG GCG CTT CTT GTT CCA TTTCTT GCA TGG CAA AGG ACTG
P Q E D E

wobei das Y entweder C oder G ist, so daß das Kodon für ein Prolin oder ein Arginin kodiert, durch chemische Synthese oder rekombinante DNA-Technologie.

19. Verfahren nach Anspruch 18, wobei die Sequenz die Nukleotidtypsequenz von Position 1 bis Position 554 der in Anspruch 18 g) zeigten Sequenz umfaßt.
20. Verfahren nach Anspruch 18 oder 19, wobei das Y ein C ist.
21. Verfahren nach Anspruch 18 und 19, wobei das Y ein G ist.

Revendications

Revendications pour les Etats contractants suivants : AT, BE, CH, DE, FR, GB, GR, IT, LI, LU, NL, SE

1. Inhibiteur d'interleukine-1 (IL-1i) qui comprend la séquence d'acides aminés de la position 26 à la fin dans la séquence suivante :

10	M	E	I	C	R	G	L	R	S	H	L	I	T	L	L	L	F	L	F	H	20
15	S	E	T	I	C	X	P	S	G	R	K	S	S	K	H	Q	A	F	R	I	40
	W	D	V	N	Q	K	T	F	Y	L	R	N	N	Q	L	V	A	G	Y	L	60
20	Q	G	P	N	V	N	L	E	E	K	I	D	V	V	P	I	E	P	H	A	80
25	L	F	L	G	I	H	G	G	K	M	C	L	S	C	V	K	S	G	D	D	100
30	T	R	L	Q	L	E	A	V	N	I	T	D	L	S	E	N	R	K	Q	D	120
	K	R	F	A	F	I	R	S	D	S	G	P	T	T	S	F	E	S	A	A	140
35	C	P	G	W	F	L	C	T	A	M	E	A	D	Q	P	V	S	L	T	N	160
40	M	P	D	E	G	V	M	V	T	K	F	Y	F	Q	E	D	E				170

où X est soit P = proline ou R = arginine

2. L'inhibiteur d'interleukine-1 selon la revendication 1, où X est une proline.
3. L'inhibiteur d'interleukine-1 selon la revendication 1, où le X est une arginine.
4. L'inhibiteur d'interleukine-1 selon les revendications 1 et 3, dans lesquelles l'inhibiteur comprend la séquence d'acides aminés depuis la position 1 jusqu'à la fin de la séquence dans la revendication 1.
5. Séquence d'ADN codant pour les inhibiteurs d'interleukine-1 des revendications 1 à 4.
6. Séquence d'ADN isolée, laquelle séquence comprend la séquence suivante de nucléotides depuis la position 99 jusqu'à la position 554 :

10 20 30 40 50 60
 GAAATCCGGGCTGCAAGTCACAGAAATGGAATCTGCAGAGGCCCTCCGCAGTCACCTAATCA
 M E I C R G L R S H L I
 5 70 80 90 100 110 120
 CTCTCCTCCTCTTCTCTTCCATTTCAGAGACGATCTGCCYACCCCTCTGGGAGAAAATCCA
 T L L L F L F H S E T I C (X) P S G R K S
 10 130 140 150 160 170 180
 GCAAGATGCAAGCCTTCAGAATCTGGGATGTTAACCAGAAGACCTTCTATCTGAGGAACA
 S K M Q A F R I W D V N Q K T F Y L R N
 190 200 210 220 230 240
 ACCAACTAGTTGCTGGATACTTGC AAGGACCAATGTCAATTTAGAAGAAAAGATAGATG
 15 N Q L V A G Y L Q G P N V N L E E K I D
 250 260 270 280 290 300
 TGGTACCCATTGAGCCTCATGCTCTGTTCTTGGGAATCCATGGAGGGGAAGATGTGCCCTGT
 20 V V P I E P H A L F L G I H G G R M C L
 310 320 330 340 350 360
 CCTGTGTCAAGTCTGGTGATGAGACCAGACTCCAGCTGGAGGCAGTTAACATCACTGACC
 S C V K S G D E T R L Q L E A V N I T D
 370 380 390 400 410 420
 TGAGCGAGAAACAGAAAGCAGGACAAGCGCTTCGCCCTTCATCCGCTCAGACAGTGGCCCCA
 L S E N R K Q D K R F A F I R S D S G P
 430 440 450 460 470 480
 CCACCAAGTTTGAAGTCTGCCCGCTGCCCGGTTGGTTCTCTGCACAGCGATGGAACTCTG
 T T S F E S A A C P G W F L C T A H E A
 490 500 510 520 530 540
 ACCAGCCCCGTCAGCCTCACCAATATGCCCTGACGAAGGCGTCATGGTCAACCAATTCTACT
 D Q P V S L T N M P D E G V H V T K F Y
 550 560 570 580 590 600
 TCCAGGAGGACGAGTAGTACTGCCCCAGGCCCTGCTGTTCCATTCTTGCATGGCAAGGACTG
 F Q E D E *

où le Y représente soit C ou G dont le codon code pour une proline ou une arginine

7. Séquence d'ADN isolé, laquelle séquence comprend la séquence de nucléotides depuis la position 1 jusqu'à la position 554 de la séquence montrée dans la revendication 6.
8. La séquence d'ADN selon les revendications 6 ou 7, dans laquelle le Y est un C.
9. La séquence d'ADN selon les revendications 6 ou 7, dans laquelle le Y est un G.
10. La molécule d'ADN recombinant GT10-IL1i-2A déposée sous le numéro ATCC 40488.

11. Méthode par ADN recombinant pour la production de l'antagoniste pour le récepteur de l'interleukine-1 (IL-1i) des revendications 1 à 4 comprenant :

(a) la culture d'une cellule hôte qui inclut un vecteur, ledit vecteur incluant une séquence d'ADN

opérationnels nécessaires pour exprimer la séquence d'ADN dans la cellule-hôte dans des conditions appropriées pour l'amplification dudit vecteur et l'expression de l'IL-1; et
(b) la récupération de la protéine IL-1.

- 5 12. La méthode de la revendication 10, dans laquelle on permet à l'IL-1i d'assumer une structure tertiaire active par laquelle elle possède une activité inhibitrice de l'IL-1.
13. La méthode de la revendication 11, dans laquelle ladite séquence d'ADN est un ADNc.
- 10 14. La méthode de la revendication 11, dans laquelle ladite séquence d'ADN est une séquence génomique.
15. La méthode de la revendication 11, dans laquelle ladite séquence d'ADN est dérivée de cellules de mammifères.
- 15 16. La méthode de la revendication 15, dans laquelle la séquence d'ADN est dérivée de monocytes humains.
17. La méthode de la revendication 11, dans laquelle ladite cellule-hôte est un microorganisme.
- 20 18. La méthode de la revendication 17, dans laquelle ledit microorganisme est E.coli.
19. La méthode de la revendication 11, dans laquelle ladite cellule-hôte est une cellule de mammifère.
20. La méthode de la revendication 19, dans laquelle ladite cellule de mammifère est une cellule CHO.
- 25 21. La méthode de la revendication 11, dans laquelle ladite séquence d'ADN est un polynucléotide synthétique.
22. Méthode par ADN recombinant pour la production d'un vecteur d'expression de l'inhibiteur d'interleukine-1 (IL-1i) comprenant :
- 30 (a) la préparation d'une séquence d'ADN codant pour l'IL-1i de l'une quelconque des revendications 1 à 4 ; et
- (b) le sousclonage de la séquence d'ADN à l'intérieur d'un vecteur pouvant être transformé ou transfecté et répliqué dans une cellule-hôte, un tel vecteur contenant des éléments opérationnels nécessaires pour exprimer la séquence d'ADN.
- 35

Revendications pour l'Etat contractant suivant : ES

- 40 1. Méthode par ADN recombinant pour la production d'un antagoniste pour le récepteur de l'interleukine-1 (IL-1i) comprenant la séquence d'acides aminés depuis la position 28 jusqu'à la fin dans la séquence suivante :
- 45
- 50
- 55

5
 10
 15
 20
 25
 30
 35

M E I C R G L R S ¹⁰ H L I T L L L F L F ²⁰ H
 S E T I C (X) P S G ³⁰ R K S S K M Q A F R ⁴⁰ I
 W D V N Q K T F Y ⁵⁰ L R N N Q L V A G Y ⁶⁰ L
 Q G P N V N L E E ⁷⁰ K I D V V P I E P H ⁸⁰ A
 L F L G I H G G K ⁹⁰ M C L S C V K S G D ¹⁰⁰ C
 T R L Q L E A V N ¹¹⁰ I T D L S E N R K Q ¹²⁰ D
 K R F A F I R S D ¹³⁰ S G P T T S F E S A ¹⁴⁰ A
 C P G W F L C T A ¹⁵⁰ M E A D Q P V S L T ¹⁶⁰ N
 M P D E G V M V T ¹⁷⁰ K F Y F Q E D E

où X représente soit P = proline ou R = arginine comprenant les étapes de :

- 40
 50
 55
- (a) culture d'une cellule-hôte qui inclut un vecteur, ledit vecteur incluant une séquence d'ADN codant pour l'IL-1i et incluant des éléments opérationnels nécessaires pour exprimer la séquence d'ADN dans la cellule-hôte dans des conditions appropriées pour l'amplification dudit vecteur et l'expression de l'IL-1i et
 - (b) la récupération de la protéine IL-1i.

2. La méthode selon la revendication 1, dans laquelle X est une proline.

3. La méthode selon la revendication 1, dans laquelle X est une arginine.

4. La méthode selon les revendications 1 et 3, dans laquelle l'inhibiteur comprend la séquence d'acides aminés depuis la position 1 jusqu'à la fin de la séquence dans la revendication 1.

5. La méthode de la revendication 1, dans laquelle on permet à l'IL-1i d'assumer une structure tertiaire active par laquelle elle possède une activité inhibitrice de l'IL-1.

6. La méthode de la revendication 1, dans laquelle ledit séquence d'ADN est un ADNc.

7. La méthode de la revendication 1, dans laquelle ledit séquence d'ADN est une séquence génomique.

8. La méthode de la revendication 1, dans laquelle ladite séquence d'ADN est dérivée de cellules de mammifères.
- 5 9. La méthode de la revendication 8, dans laquelle la séquence d'ADN est dérivée de monocytes humains.
- 10 10. La méthode de la revendication 1, dans laquelle ladite cellule-hôte est un microorganisme.
11. La méthode de la revendication 10, dans laquelle ledit microorganisme est E.coli.
12. La méthode de la revendication 1, dans laquelle ladite cellule-hôte est une cellule de mammifère.
13. La méthode de la revendication 12, dans laquelle ladite cellule de mammifère est une cellule CHO.
- 15 14. La méthode de la revendication 1, dans laquelle ladite séquence d'ADN est un polynucléotide synthétique.
15. Méthode par ADN recombinant pour la production d'un vecteur d'expression de l'inhibiteur d'interleukine-1 (IL-1i) comprenant :
 - 20 (a) la préparation d'une séquence d'ADN codant pour l'IL-1i de l'une quelconque des revendications 1 à 4 ; et
 - (b) le sousclonage de la séquence d'ADN à l'intérieur d'un vecteur pouvant être transformé ou transfecté et répliqué dans une cellule-hôte, un tel vecteur contenant des éléments opérationnels nécessaires pour exprimer la séquence d'ADN.
- 25 16. Méthode pour la préparation de la molécule d'ADN recombinant GT10-IL1i-2A déposé sous le numéro ATCC 40488 en combinant d'une façon connue le vecteur GT10 et un fragment EcoRI de 1.850bp qui porte une séquence codant pour l'inhibiteur d'IL-1i décrit dans les revendications 1 à 4.
- 30 17. Méthode de préparation d'une séquence d'ADN codant pour les inhibiteurs d'interleukine-1 décrits dans les revendications 1 à 4 par synthèse chimique ou technologie de l'ADN recombinant.
18. Méthode de préparation d'une séquence d'ADN isolée, laquelle séquence comprend la séquence suivante de nucléotides depuis la position 99 jusqu'à la position 554 :
35
40
45
50
55

FIG. 1a

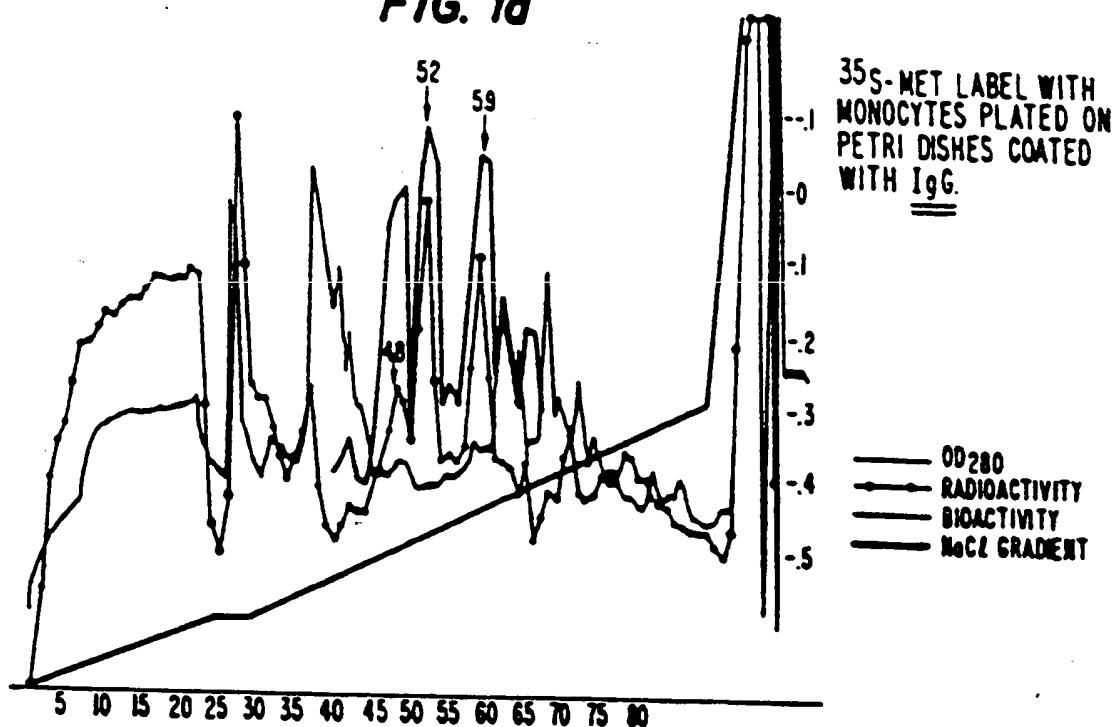


FIG. 1b

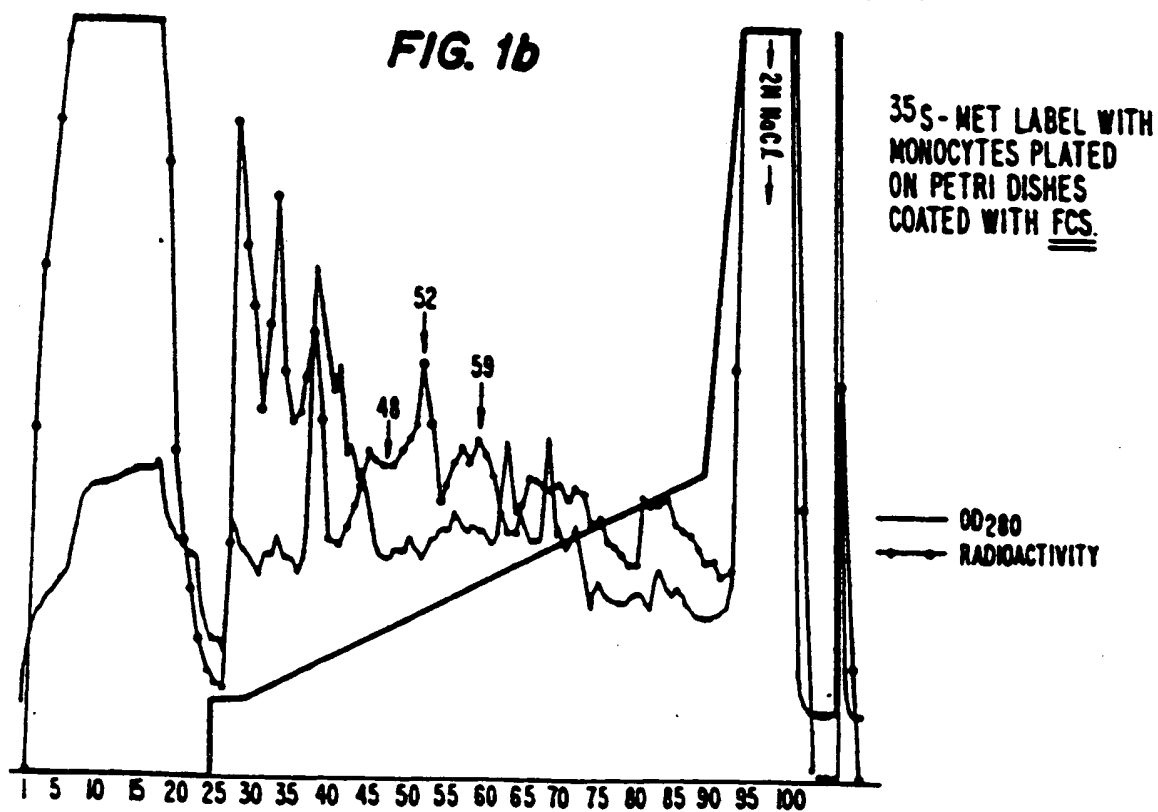


FIG. 2a

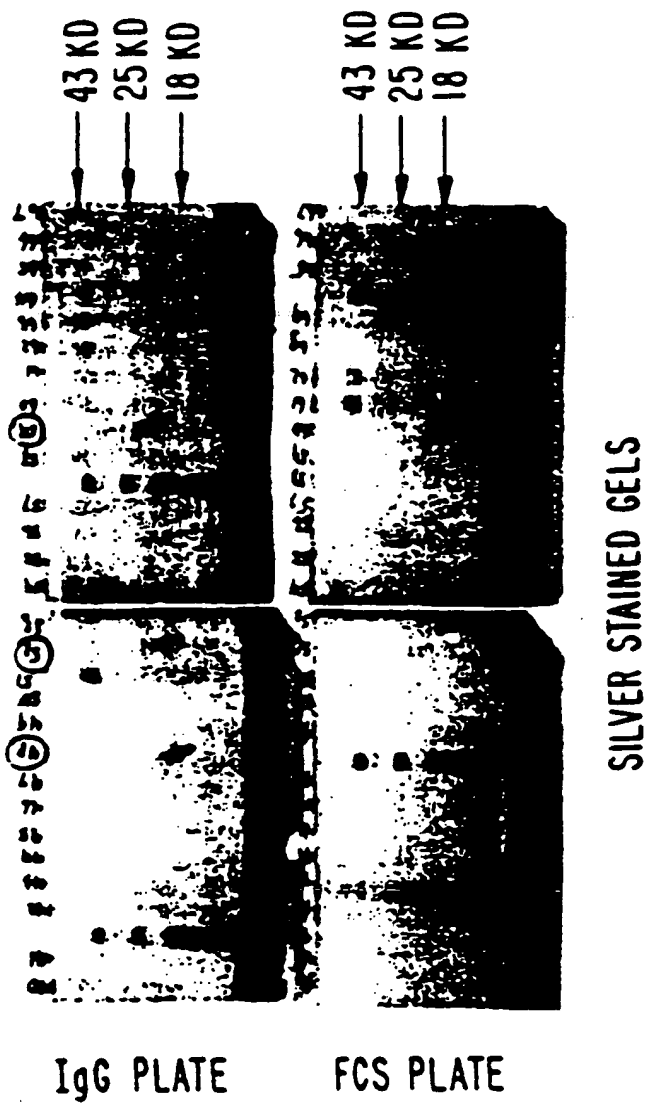
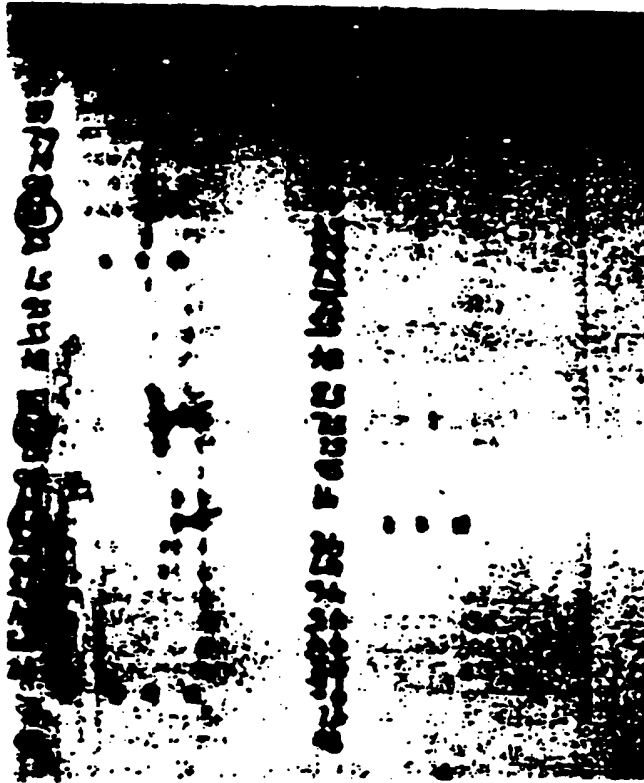


FIG. 2b



AUTORADS

FIG. 3a

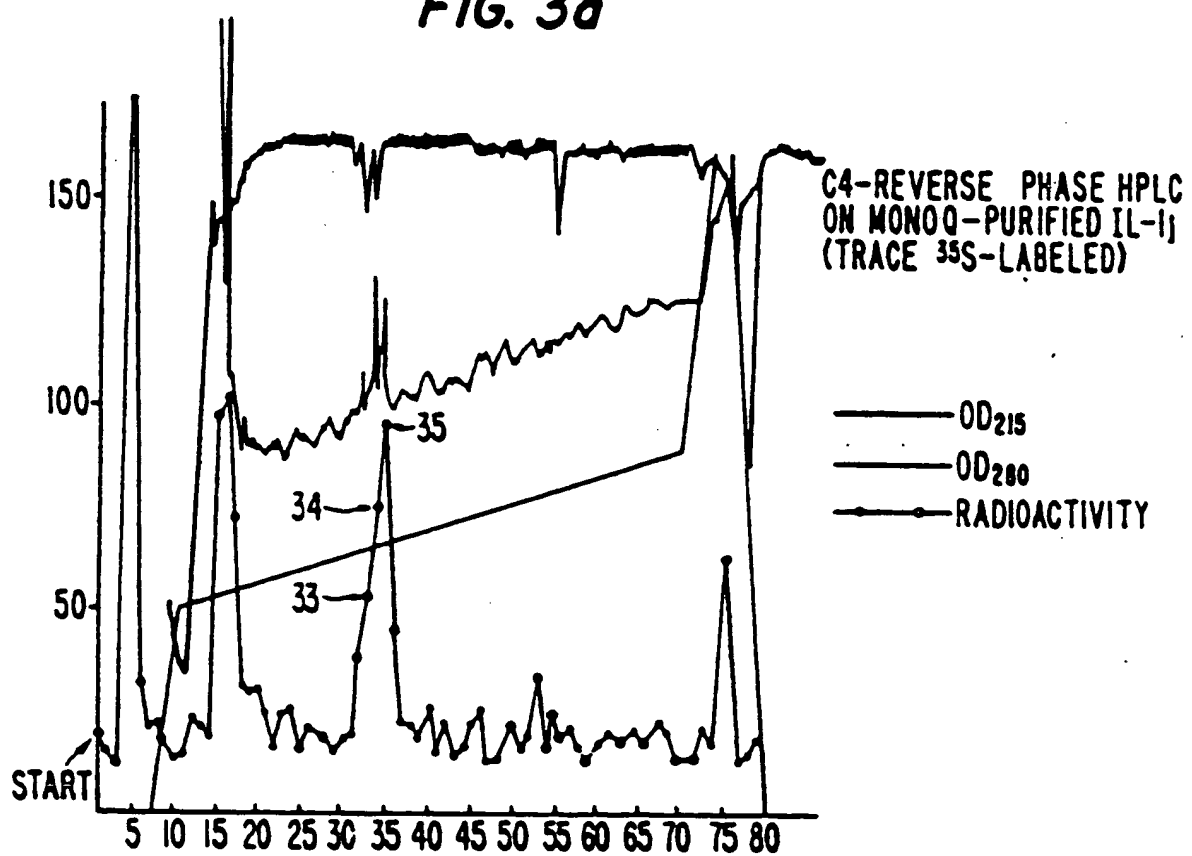
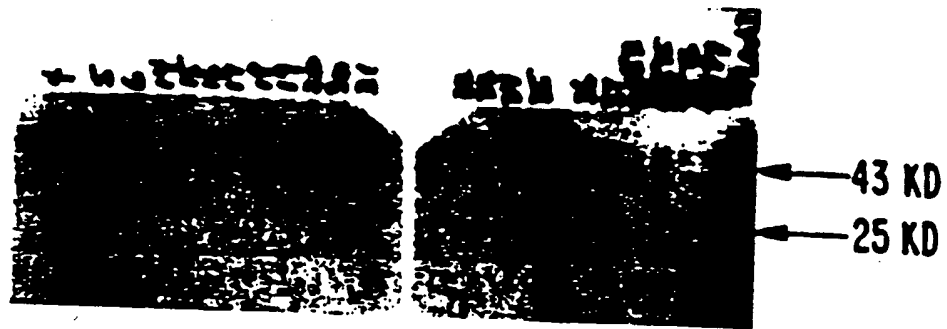


FIG. 3b



SILVER-STAINED GELS

FIG. 3c



AUTORAD

FIG. 4a

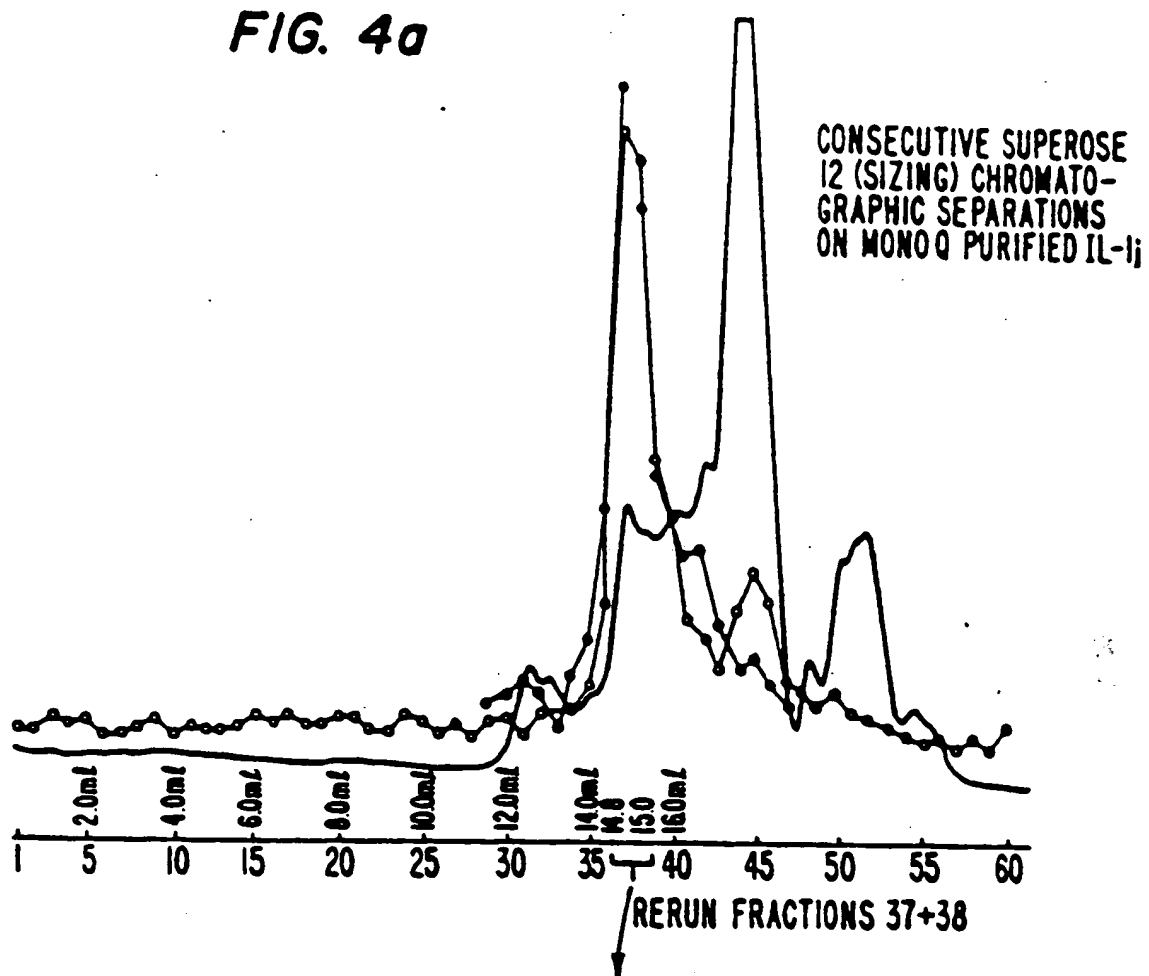


FIG. 4b

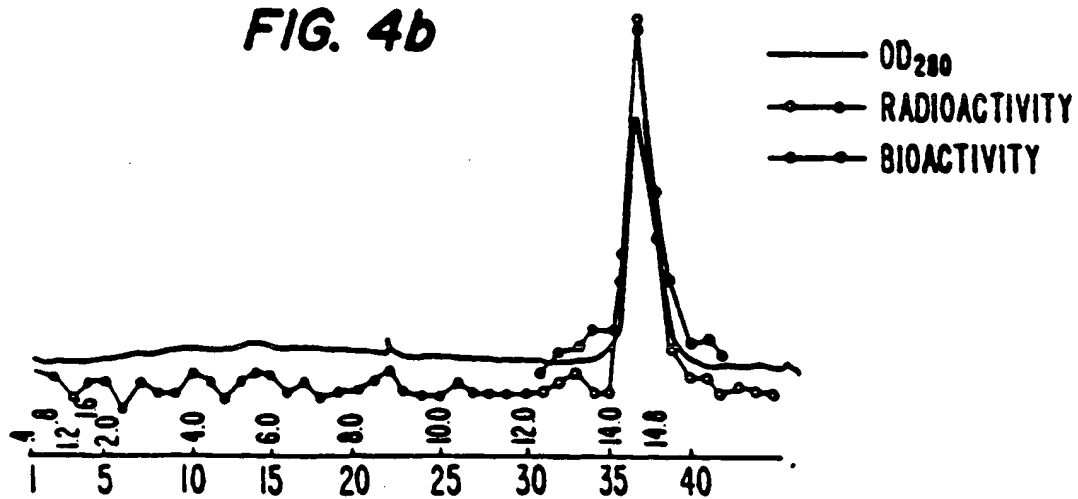


FIG. 5a

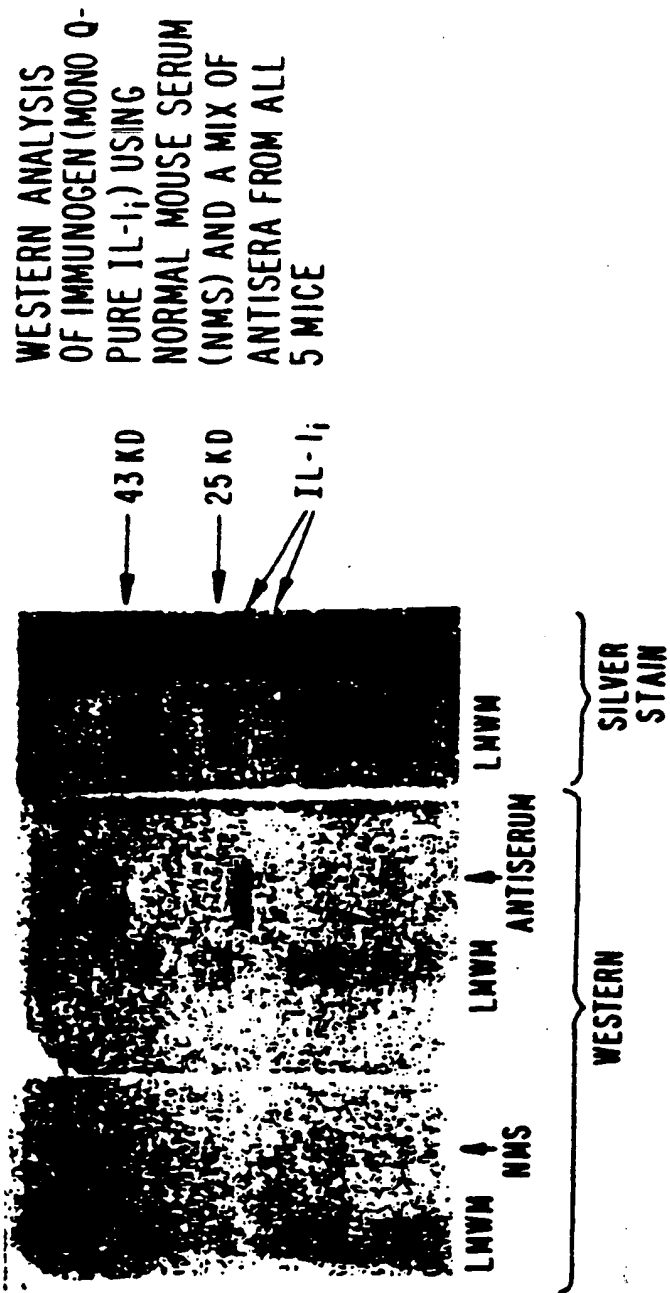
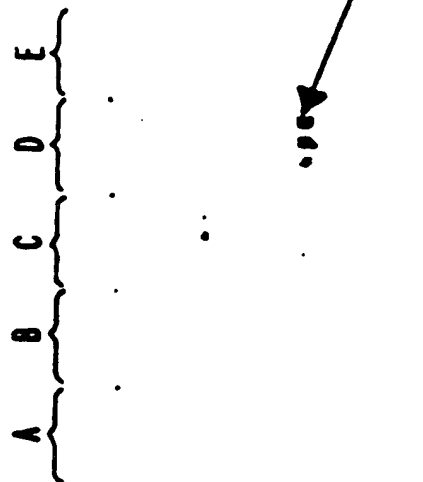


FIG. 5b



WESTERN ANALYSIS OF
IMMUNOGEN USING THE
SEPARATE BLOODS OF ALL
5 MICE (A-E)

FIG. 6

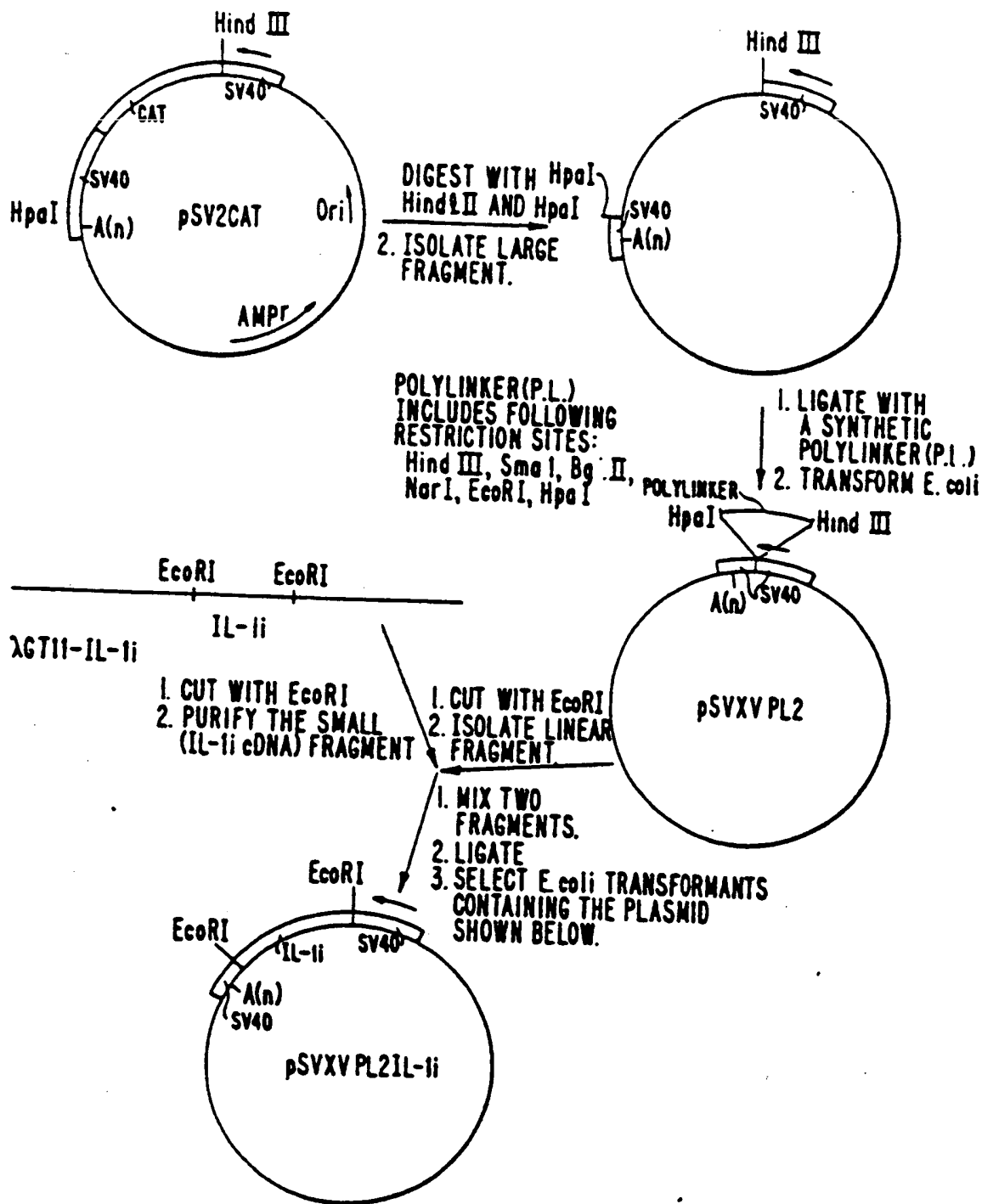


FIG. 7

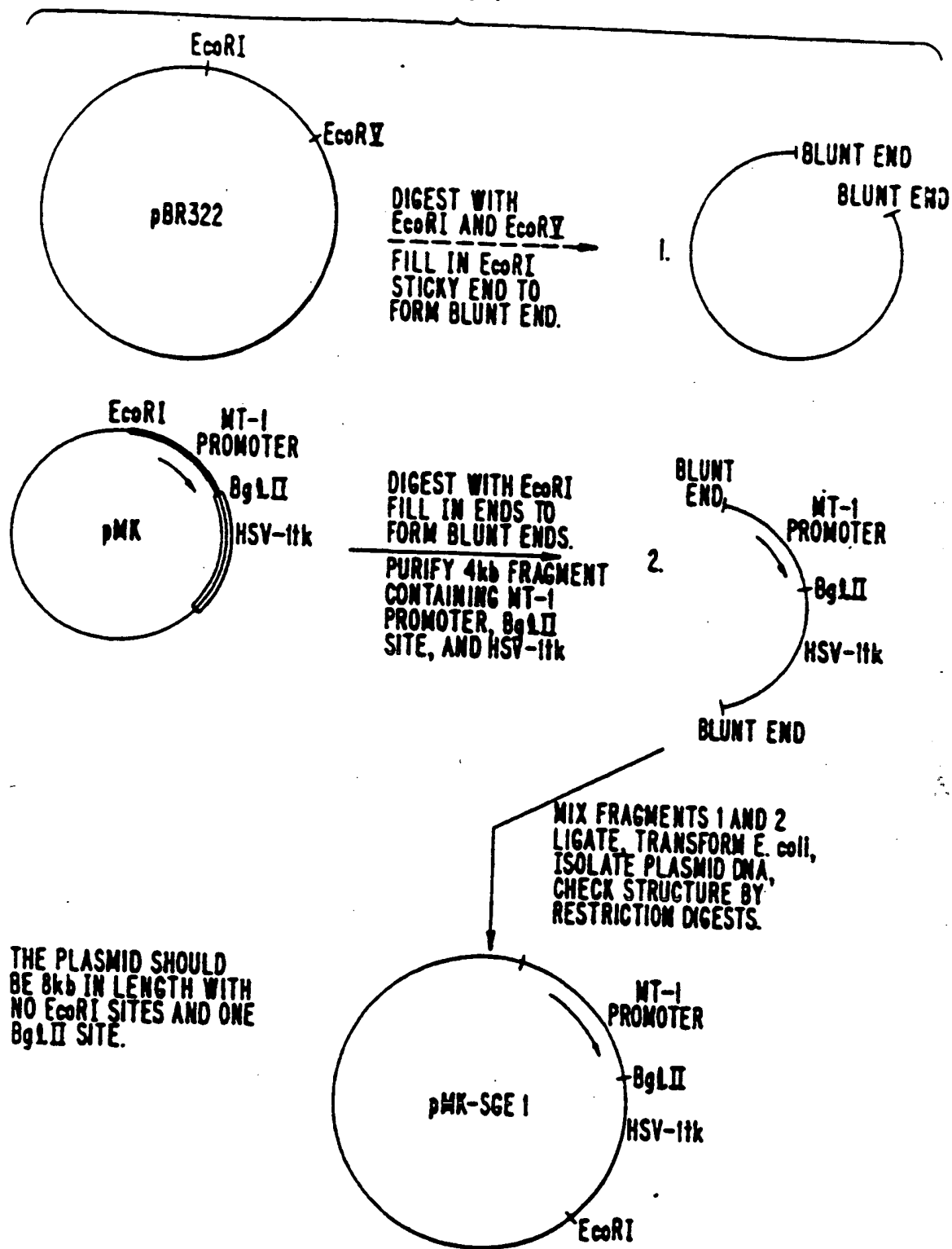


FIG. 7 (cont.)

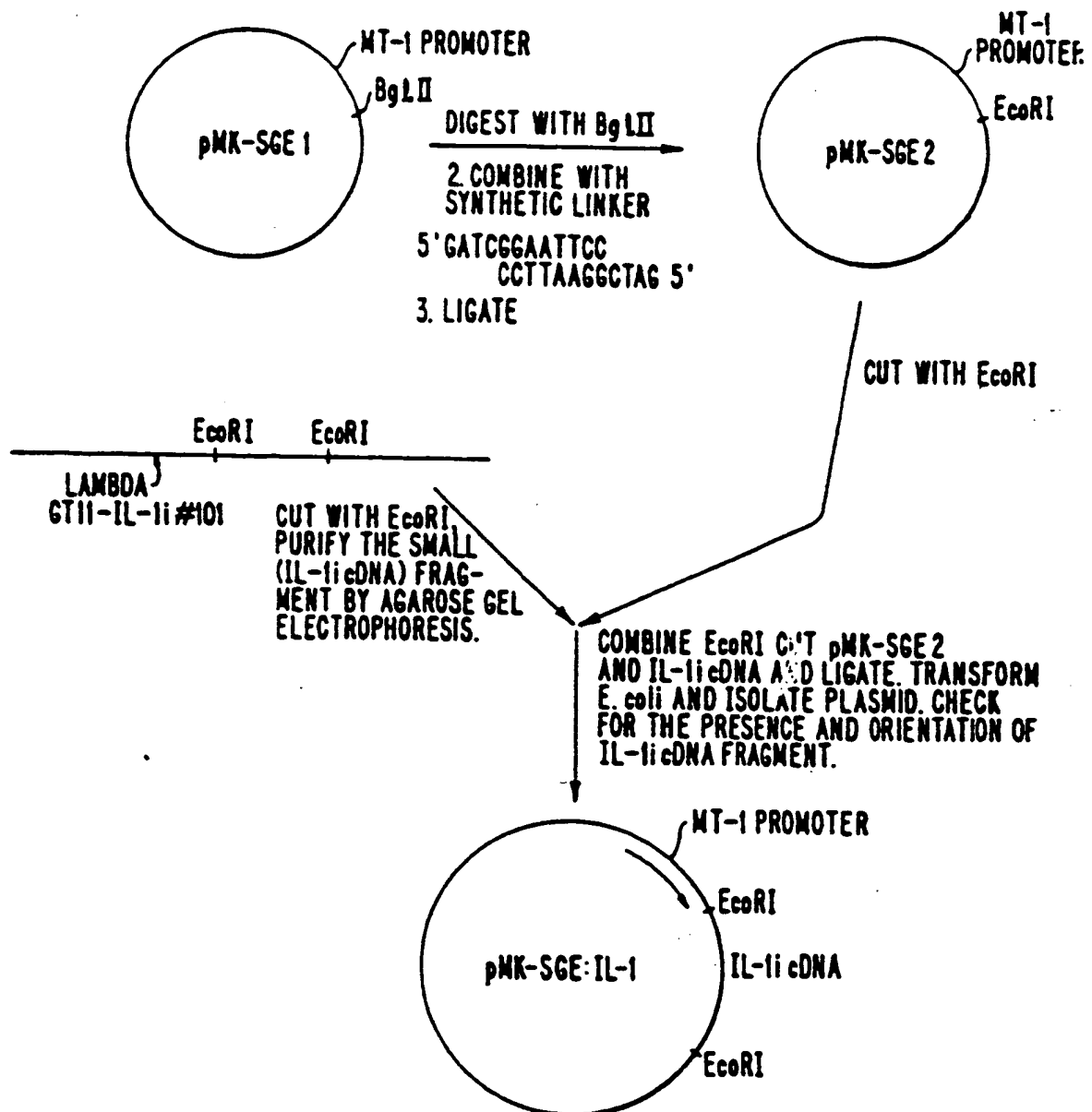


FIG. 8a

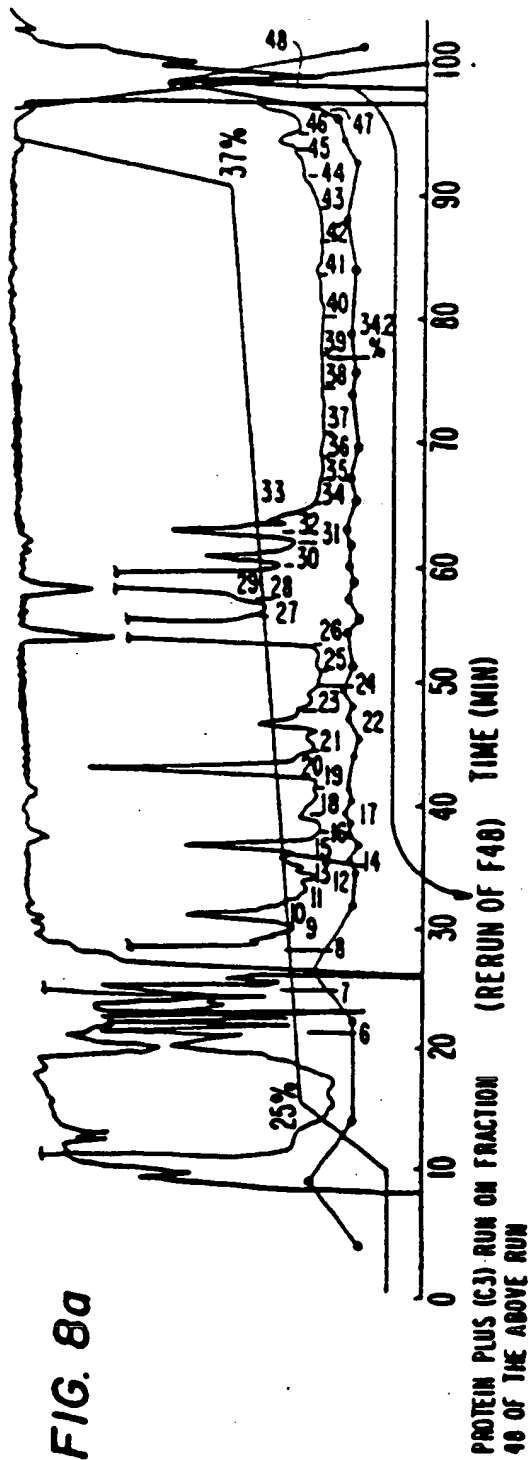


FIG. 8b

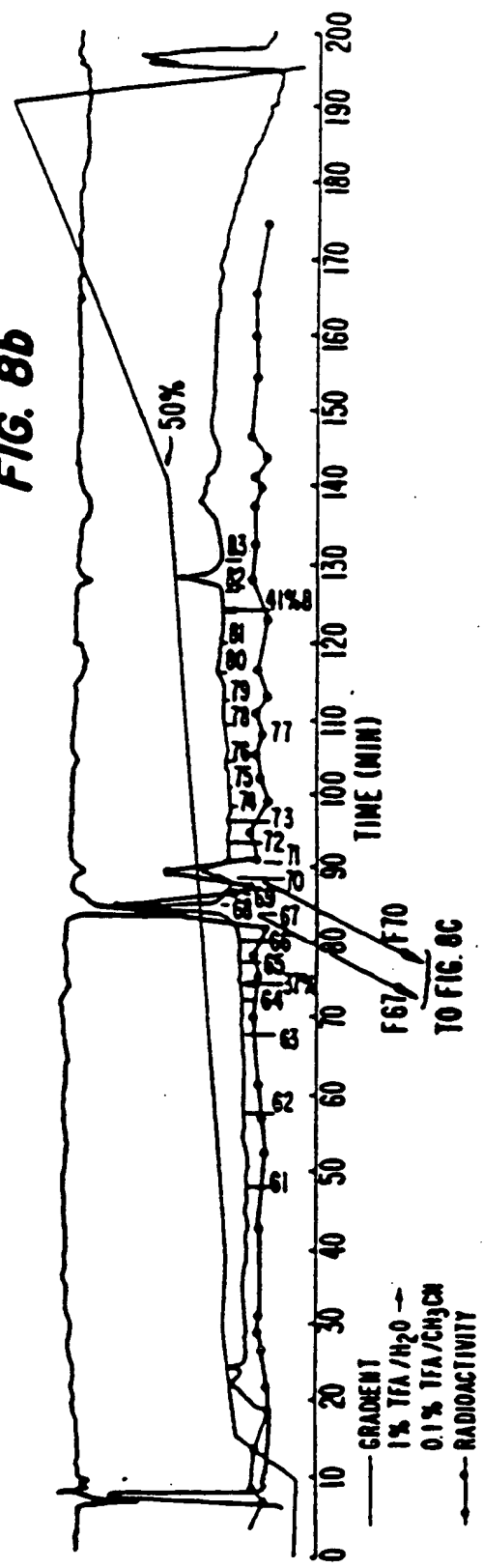


FIG. 8c

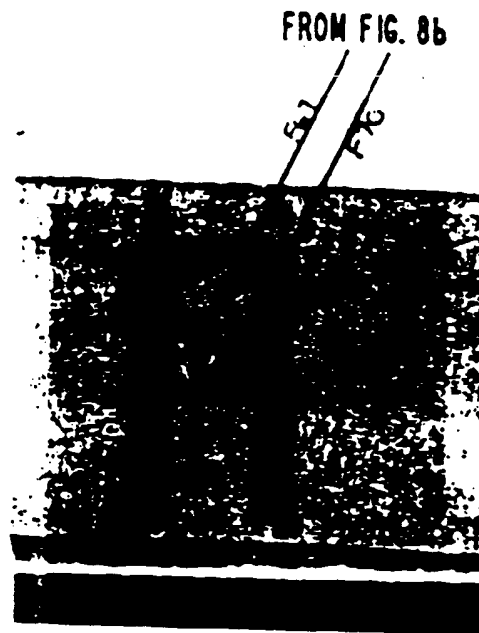
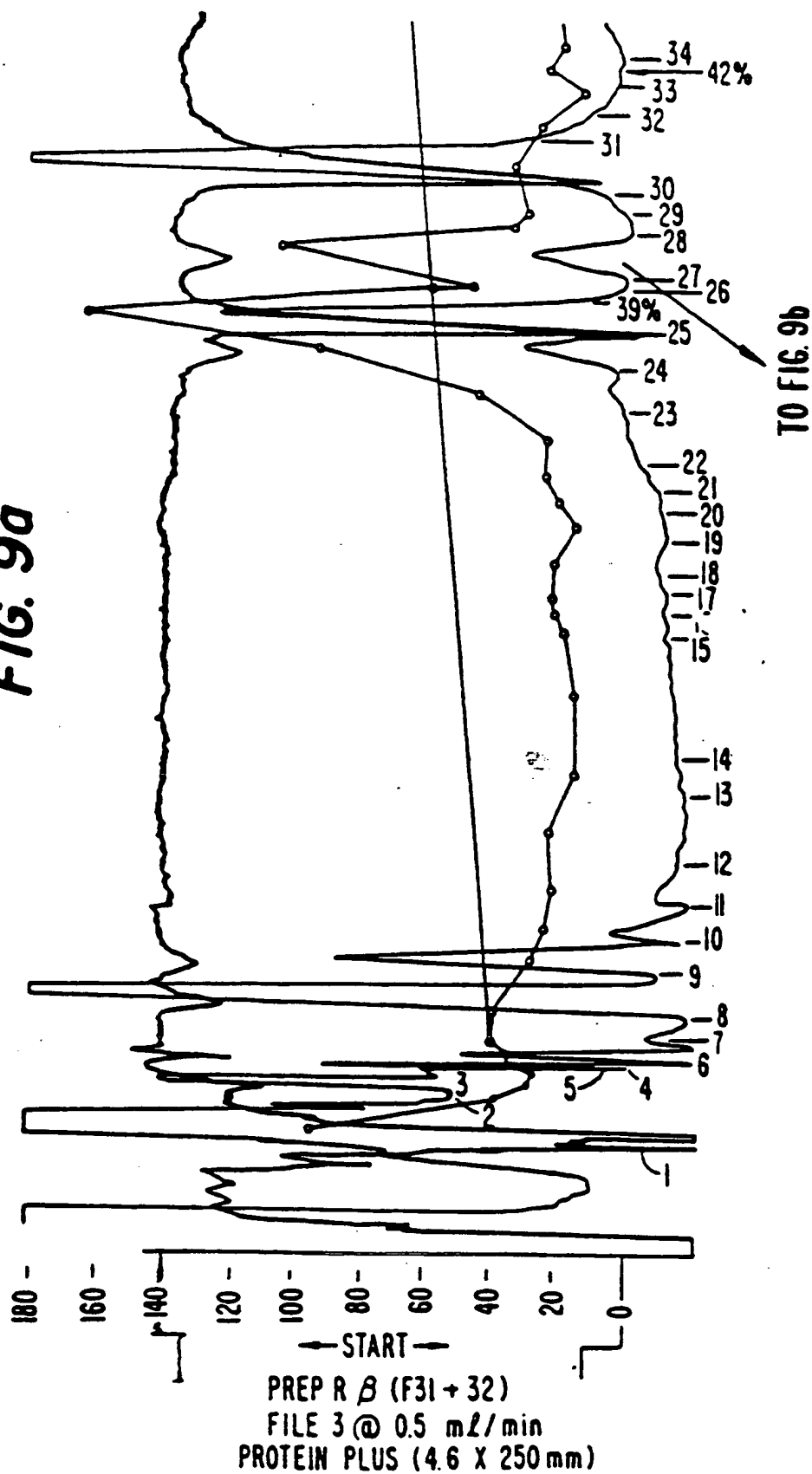


FIG. 8d



FIG. 9a



FROM FIG. 9a



1
22
23
24
25
26
27
28
29
30
31
32
33
34
35
36
37
38
39
40
41
42
43
44
45
46
47
48
49
50
51
52
53
54
55
56
57
58
59
60
61
62
63
64
65
66
67
68
69
70
71
72
73
74
75
76
77
78
79
80
81
82
83
84
85
86
87
88
89
90
91
92
93
94
95
96
97
98
99
100

FIG. 9b

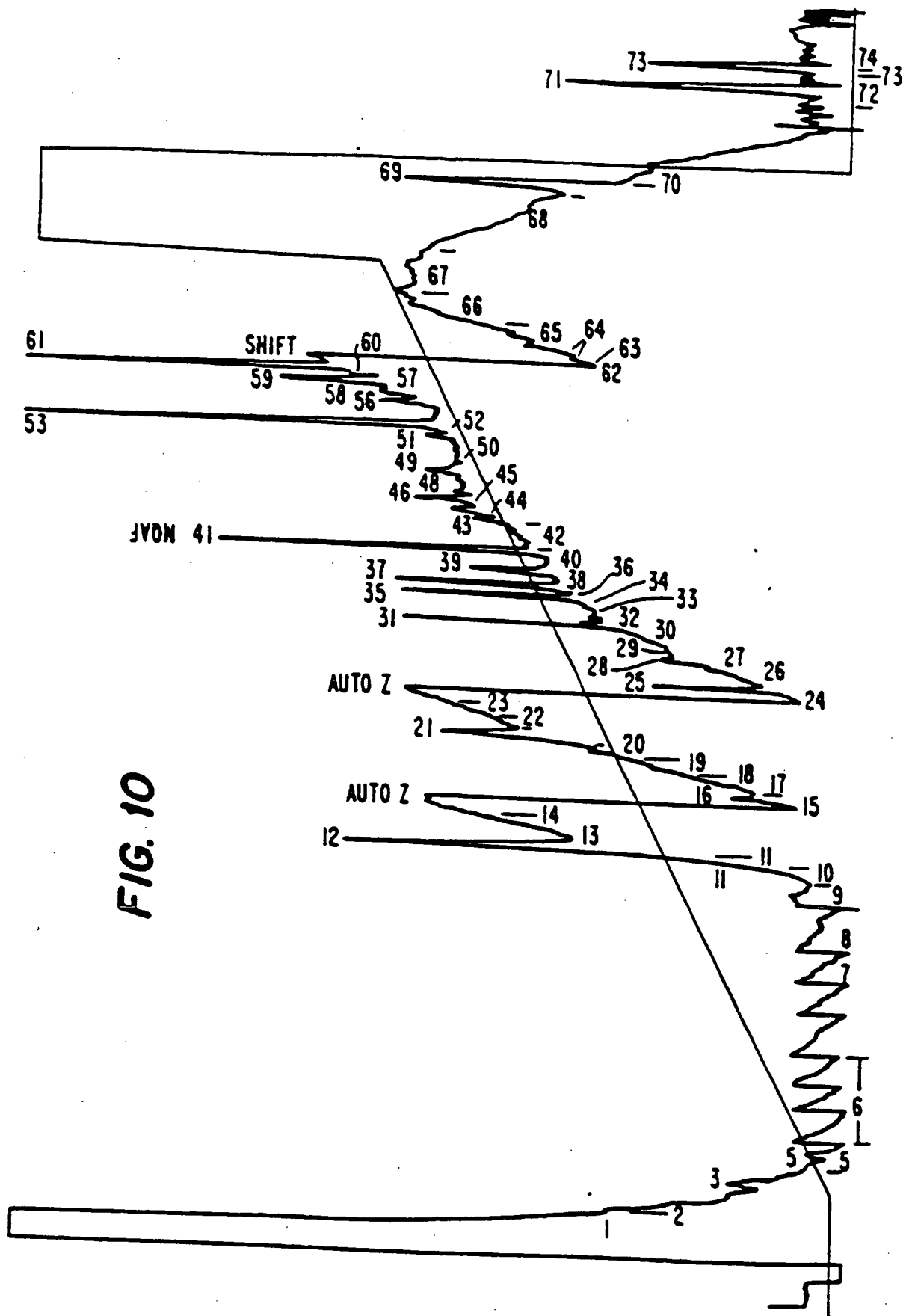


FIG. 10

IL-11 R BETA END ASP N-

FIG. 11

PEPTIDE

3H	35S	PEPTIDE
374.00	21.00	13
88.00	25.00	16
122.00	16.00	20
84.00	16.00	22
106.00	21.00	23
75.00	21.00	25
83.00	32.00	27
71.00	37.00	28
50.00	23.00	30
76.00	33.00	34
77.00	16.00	37
58.00	26.00	38
69.00	38.00	39
141.00	21.00	41
89.00	38.00	43
111.00	15.00	46
76.00	27.00	48
83.00	16.00	50
276.00	56.00	51
73.00	18.00	53
67.00	23.00	54
77.00	16.00	57
70.00	23.00	58
80.00	22.00	60
138.00	23.00	62

ORDER FOR SEQUENCING
51, 43, 39, 25, 30, 50, 28, 41, 48, 54, 27, 46

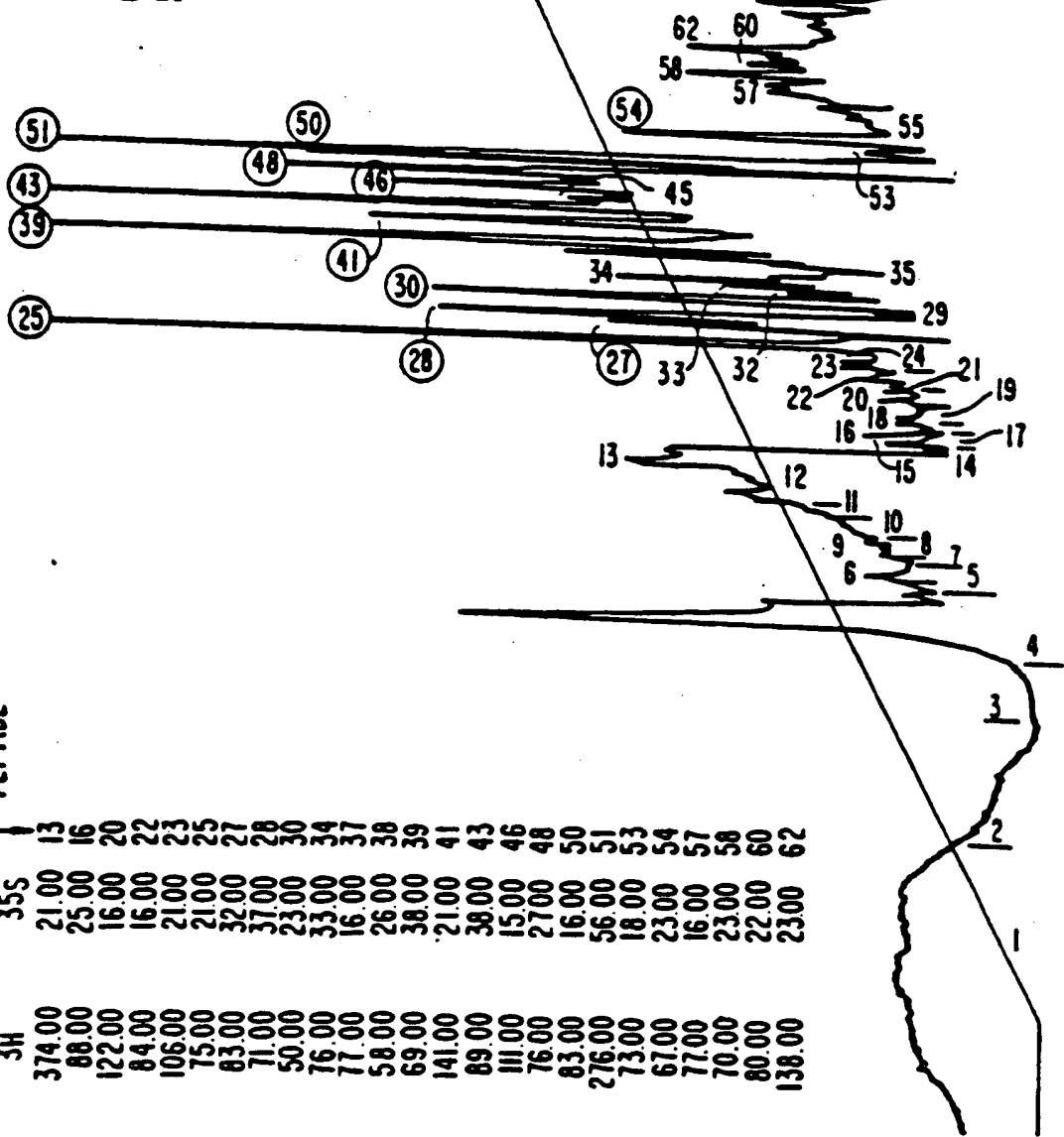


FIG. 12A

LANE 5 6 8 10 12 14

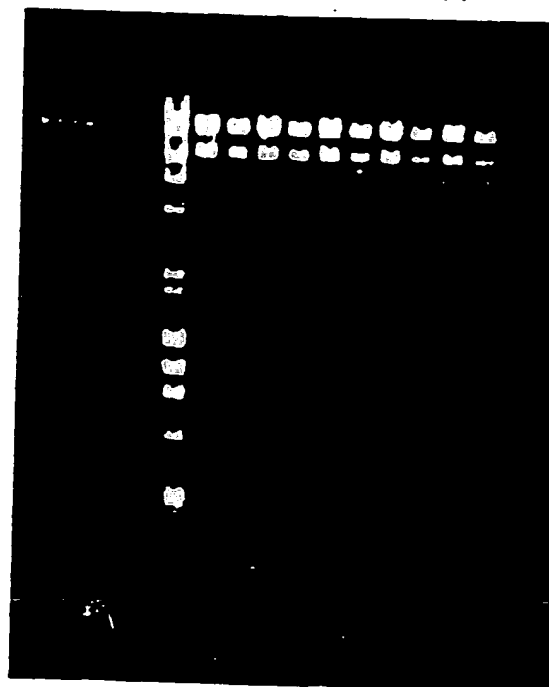


FIG. 12B

LANE 5 6 8 10 12 14



FIG. 14

10 20 30 40 50 60
 GAATTCCGGGCTGCAGTCACAGAATGGAATCTGCAGAGGCCTCCGCAGTCACCTAATCA
 M E I C R G L R S H L I

70 80 90 100 110 120
 CTCTCCTCCTCTTCTGTTCCATTTCAGAGACGATCTGCCACCCTCTGGGAGAAAATCCA
 T L L L F L F H S E T I C (P) P S G R K S

130 140 150 160 170 180
 GCAAGATGCAAGCCTTCAGAATCTGGGATGTTAACCAGAAGACCTTCTATCTGAGGAACA
 S K M Q A F R I W D V N Q K T F Y L R N

190 200 210 220 230 240
 ACCAACTAGTTGCTGGATACTTGCAAGGACCAAATGTCAATTTAGAAGAAAAGATAGATG
 N Q L V A G Y L Q G P N V N L E E K I D

250 260 270 280 290 300
 TGGTACCCATTGAGCCTCATGCTCTGTTCTTGGGAATCCATGGAGGGAAGATGTGCCTGT
 V V P I E P H A L F L G I H G G K M C L

310 320 330 340 350 360
 CCTGTGTCAAGTCTGGTGATGAGACCAGACTCCAGCTGGAGGCAGTTAACATCACTGACC
 S C V K S G D E T R L Q L E A V N I T D

370 380 390 400 410 420
 TGAGCGAGAACAGAAAGCAGGACAAGCGCTTCGCCTTCATCCGCTCAGACAGTGGCCCCA
 L S E N R K Q D K R P A F I R S D S G P

430 440 450 460 470 480
 CCACCAGTTTTGAGTCTGCCGCCTGCCCGGTTGGTTCCTCTGCACAGCGATGGAAGCTG
 T T S F E S A A C P G W F L C T A M E A

490 500 510 520 530 540
 ACCAGCCCGTCAGCCTCACCAATATGCCTGACGAAGGCGTCATGGTCACCAAATTCTACT
 D Q P V S L T N M P D E G V M V T K F Y

550 560 570 580 590 600
 TCCAGGAGGACGAGTAGTACTGCCAGGCCTGCTGTTCCATTCTTGCATGGCAAGGACTG
 F Q E D E *

FIG. 15

M E I C R G L R S H L I T L L L F L F H
S E T I C (P) P S G R K S S K M Q A F R I
W D V N Q K T F Y L R N N Q L V A G Y L
Q G P N V N L E E K I D V V P I E P H A
L F L G I H G G K M C L S C V K S G D E
T R L Q L E A V N I T D L S E N R K Q D
K R P A F I R S D S G P T T S F E S A A
C P G W F L C T A M E A D Q P V S L T N
M P D E G V M V T K F Y F Q E D E